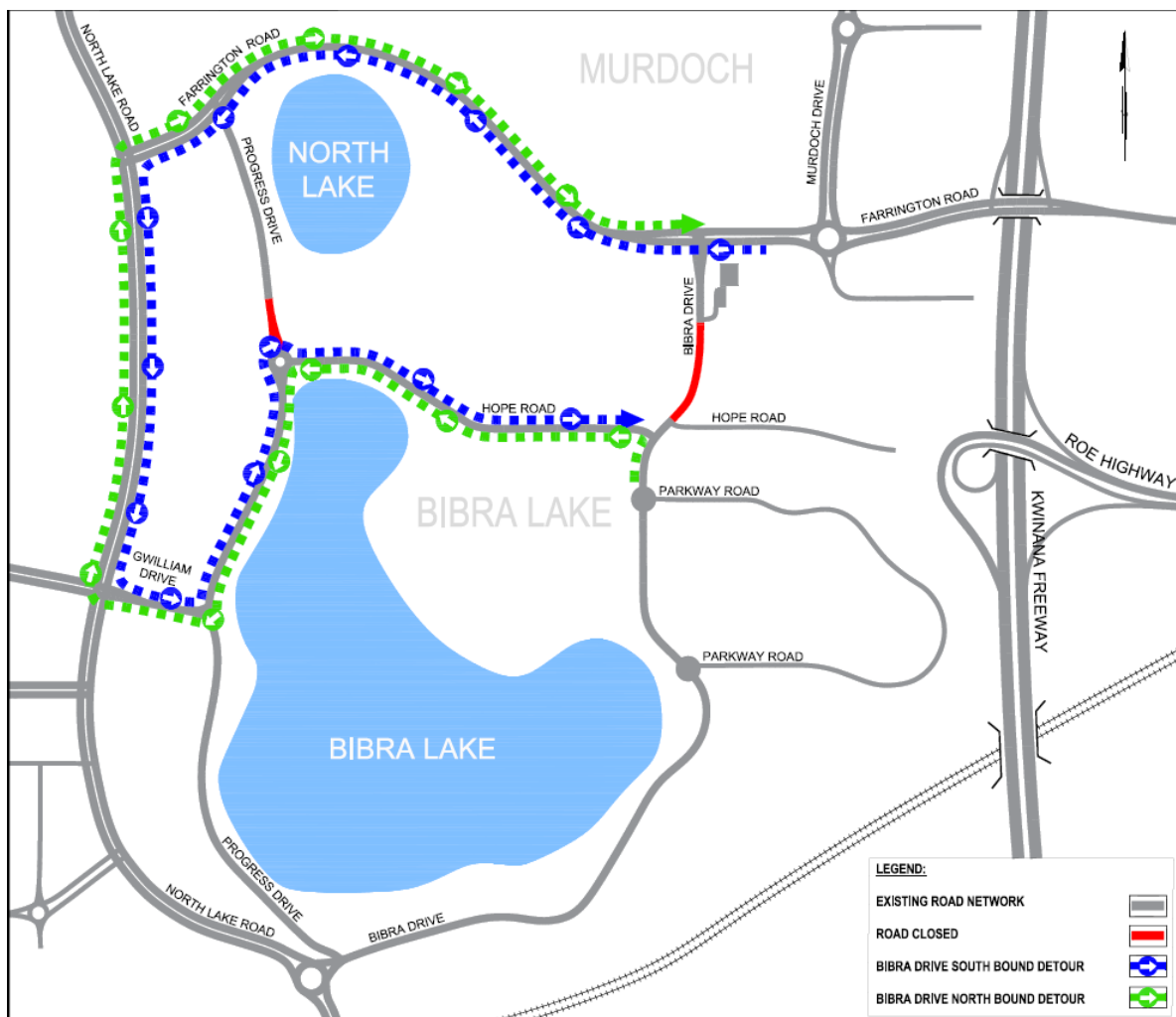


Bibra Drive and Progress Drive - Detour map

Bibra Drive is closed from Hope Road to south of the Lakeside Recreation Centre during construction of a roundabout as part of the Murdoch Drive Connection.

A detour is available along Hope Road to Progress Drive to Gwilliam Drive to North Lake Road.

Progress Drive is closed at the Hope Road roundabout. Access for cyclists and access to the recreation centre remains open.



For updates, visit projects/south metropolitan on www.mainroads.wa.gov.au

For enquiries, phone 138 138.