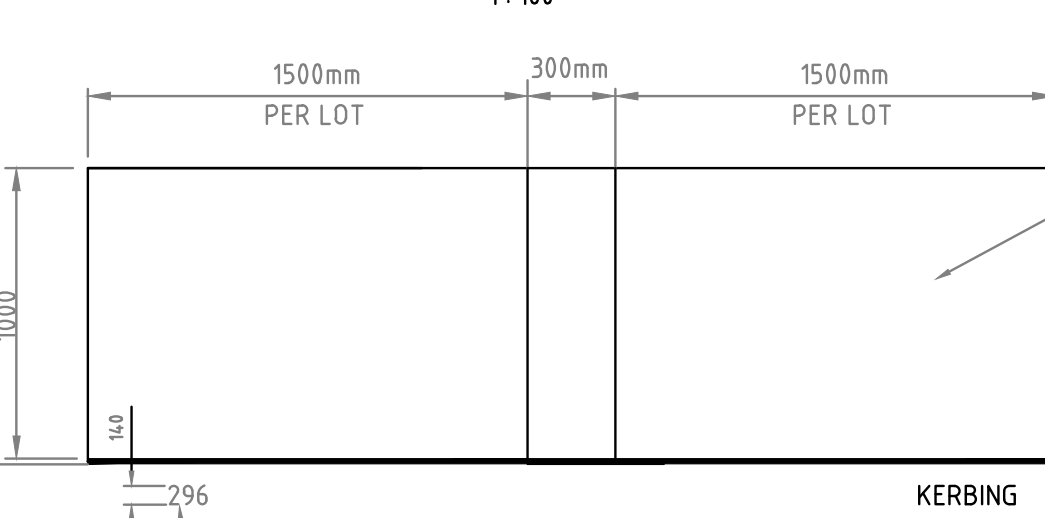
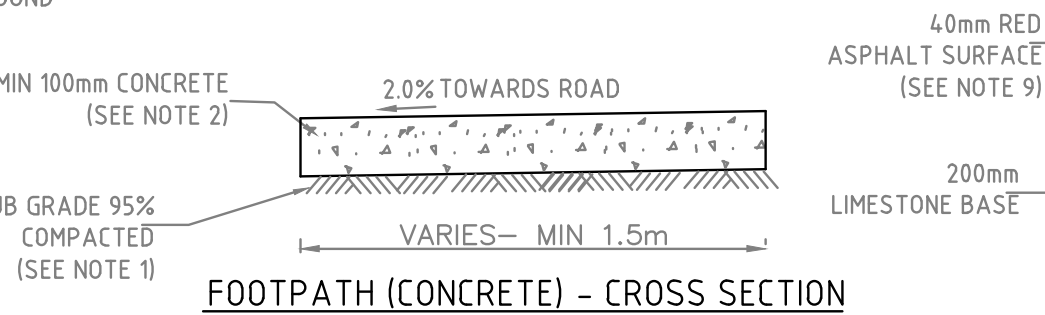


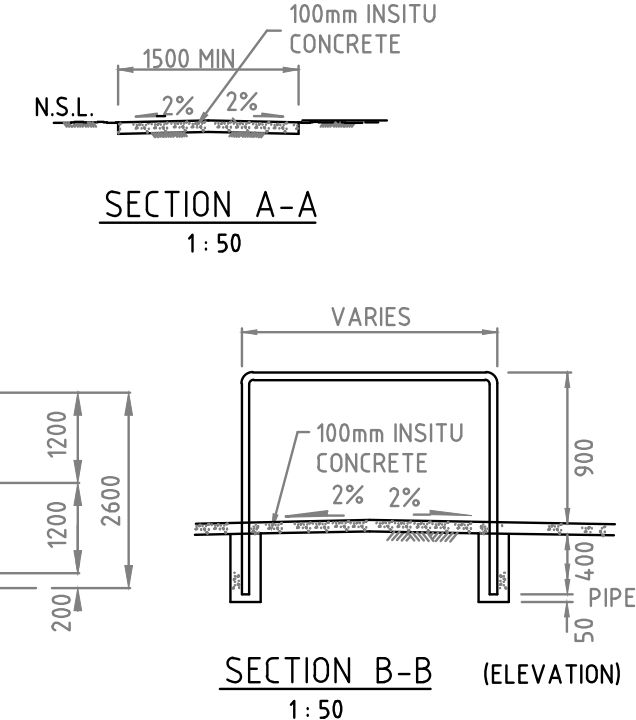
**PLAN - CYCLE SAFETY BARRIERS / FOOTPATH DETAILS**  
1: 100



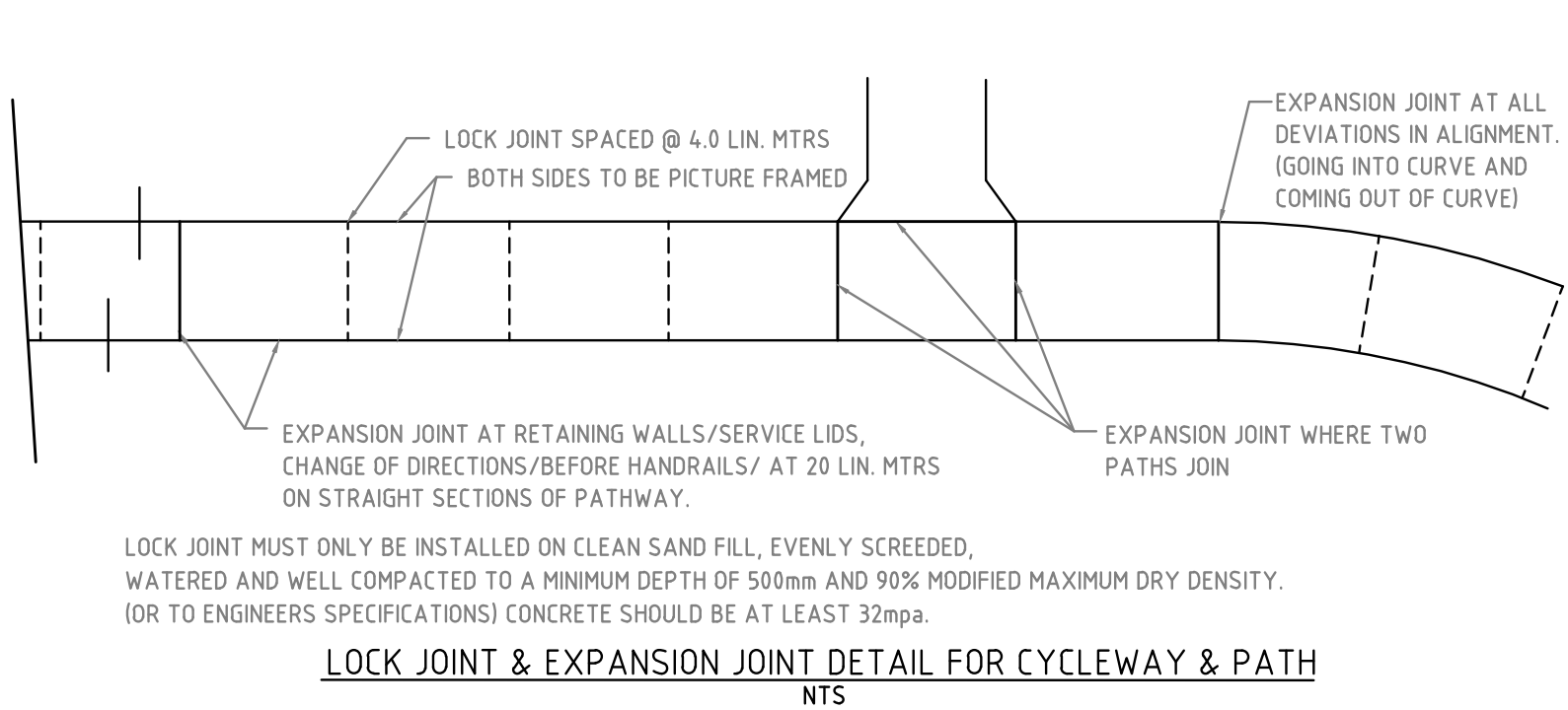
**BIN PAD DETAILS**



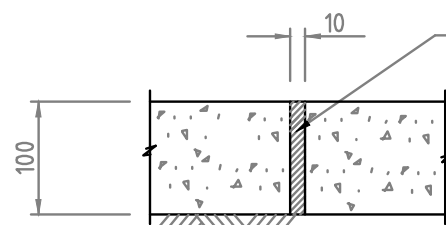
**FOOTPATH (CONCRETE) - CROSS SECTION**



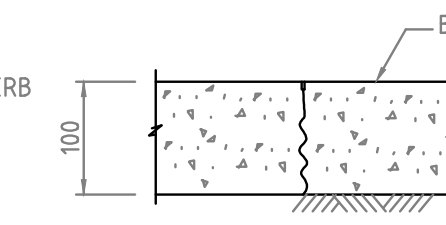
**SECTION B-B (ELEVATION)**  
1: 50



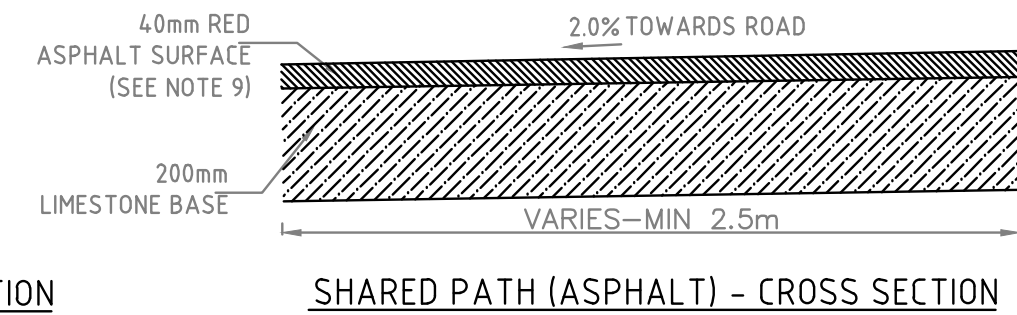
**LOCK JOINT & EXPANSION JOINT DETAIL FOR CYCLEWAY & PATH**  
NTS



**EXPANSION JOINT**  
NTS



**LOCK JOINT**  
NTS



**SHARED PATH (ASPHALT) - CROSS SECTION**

**NOTES**

- FOUNDATION TO BE COMPACTED TO MINIMUM 95% MODIFIED MDD TO A MIN DEPTH OF 500mm
- ALL CONCRETE FOR FOOTPATH CONSTRUCTION TO BE A MINIMUM OF 32MPa, 20mm AGGREGATE AND A MAXIMUM SLUMP OF 100mm
- MINIMUM THICKNESS 100mm (TOLERANCE -0mm, +10mm)
- LOCK JOINT EVERY 4.0m ( EXPANSION JOINT EVERY 20m ON STRAIGHT SECTIONS)
- TRANSVERSE CONTRACTION JOINTS SHALL CONSIST OF GROOVES CUT IN THE SURFACE OF THE CONCRETE PRIOR TO SETTING WITH AN APPROVED TOOLS. THEY SHALL BE MINIMUM DEPTH OF 10mm. SPACING OF THE JOINTS SHALL NOT EXCEED 2m ALONG THE FOOTPATH AND SHALL BE PLACED AT RIGHT ANGLES TO THE PATH CENTRE LINE.
- TRANSVERSE EXPANSION JOINTS 12mm THICK ARE TO BE CONSTRUCTED AT 20m INTERVALS OR AS SHOWN ON THE DRAWINGS FOR THE FULL DEPTH OF THE PATH. THEY SHALL BE PLACED AT RIGHT ANGLES TO THE CENTRE LINE OF THE PATH. THIS REQUIREMENT WILL BE CLOSELY SUPERVISED. THE EXPANSION JOINT MATERIAL SHALL BE CONTINUOUS FROM FORM TO FORM EXTEND VERTICALLY TO THE FULL DEPTH OF THE SLABS AND SHALL BE STIFF JOINT OR A MATERIAL APPROVED BY THE CITY. THE JOINT MATERIAL SHALL AT NO POINT PROTRUDE ABOVE THE SURFACE OR RECESSED BELOW SURFACE OF THE PATH.
- FINISH - BROOMED TO NON - SKID FINISH, PICTURE FRAMING AT EDGES.
- WORKS SHALL BE UNDERTAKEN TO THE FOLLOWING TOLERANCES:
  - GRADE- 2% (FROM PROPERTY BOUNDARY) ± 0.5%
  - EXPANSION JOINT SPACING 20m ±100mm
  - SURFACE IRREGULARITIES ± 3mm
  - PATH WIDTH- -0mm, +20mm.
- FOR ASPHALT SHARED PATH-7mm DENSE GRADED ASPHALT WITH 2% RED-OXIDE
- FORMS ARE NOT TO BE REMOVED FROM THE CONCRETE WITHIN A TIME PERIOD OF AT LEAST 8 HRS.
- PATH SHALL BE 100mm THICK FOR GENERAL PURPOSE AND 150mm THICK FOR INDUSTRIAL AREAS WHERE, SUBJECT TO VEHICLE USAGE AND THE SATISFACTIO OF THE CITY.

F			12/02/21
E			03/12/20
D			20/09/19
C			31/08/18
B			9/11/07
Document Set ID: 6490888			
Version: 6, Version 02/2021			
Chk'd	App'd	Date	



**CITY OF COCKBURN**  
9 COLEVILLE CRESCENT,  
SPEARWOOD WA 6163  
PHONE: (08) 9411 3444

**STANDARD DETAILS**

Title				ROADWORKS CYCLEWAY/FOOTPATH DETAILS			
DESIGNED	NS	APPROVED		SCALE	AS SHOWN	JOB No	
DRAWN	NS	DATE		DWG No		SHEET No	REV
CHECKED				2423B03		06	F