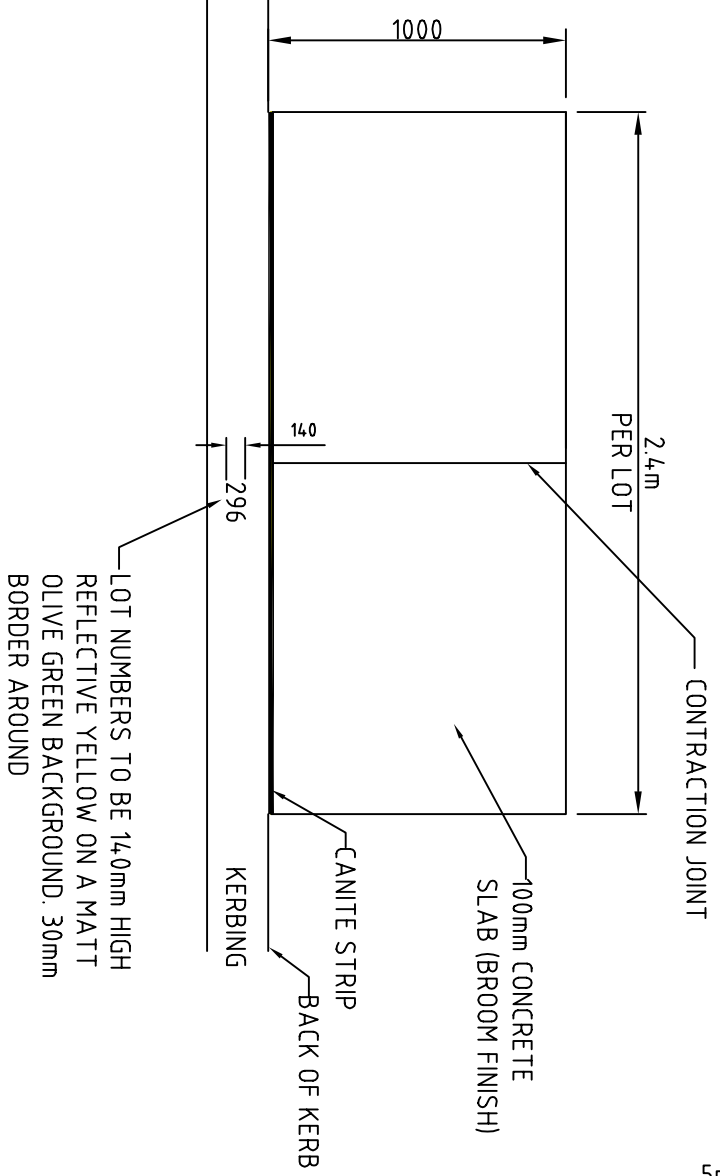
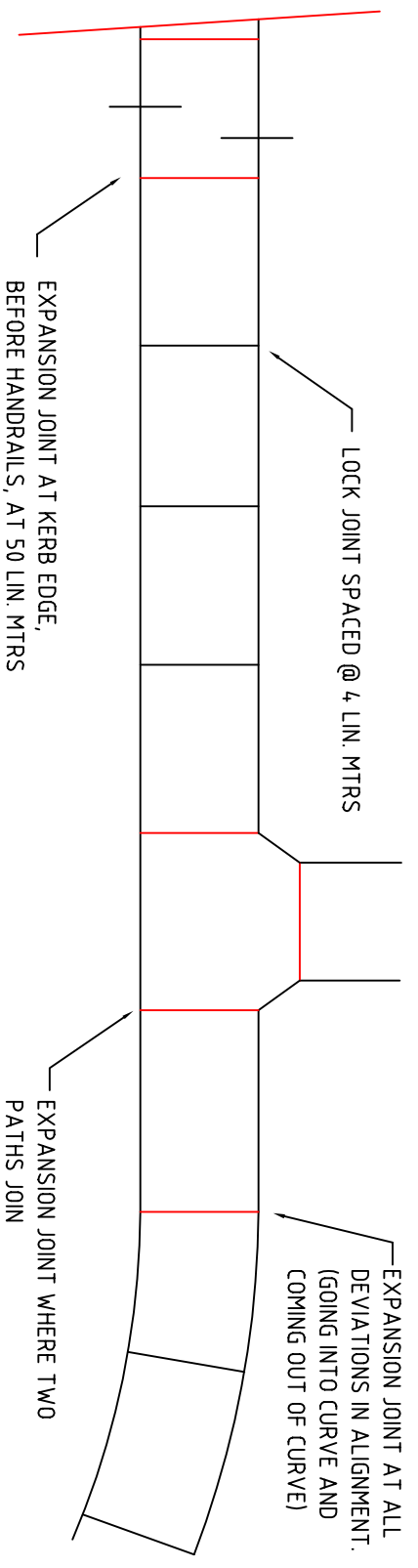


PLAN - CYCLE SAFETY BARRIERS / FOOTPATH DETAILS
1 : 100

BARRIERS - 40 NB. GALV. STEEL PIPEØØ HIGH & PAINTED WHITE
CONC. PATH - PROVIDE LOCK JOINTS AND EXPANSION JOINTS
AS SHOWN IN DETAIL BELOW.

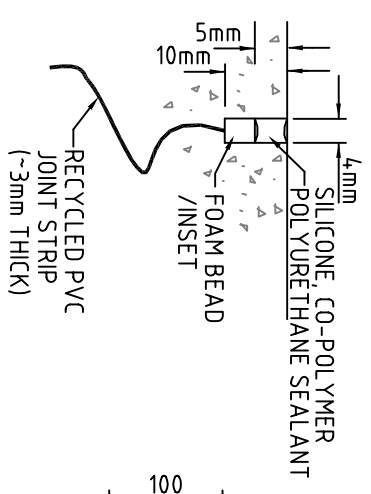


LOT NUMBERS TO BE 14.0mm HIGH
REFLECTIVE YELLOW ON A MATT
OLIVE GREEN BACKGROUND. 30mm
BORDER AROUND

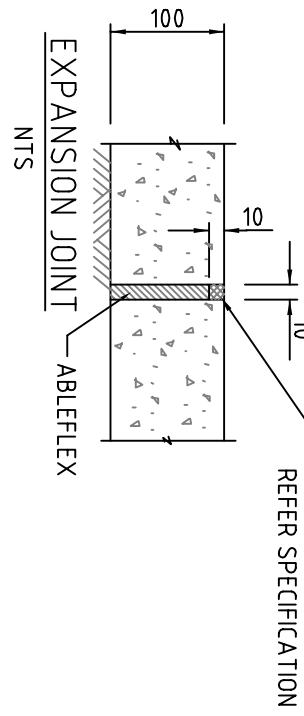
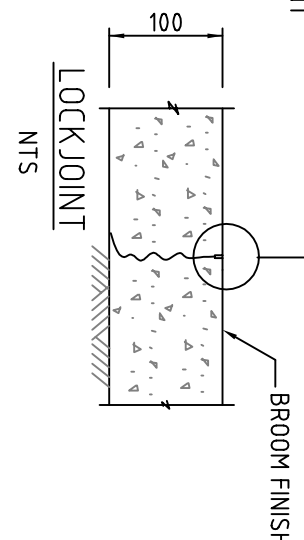


LOCK JOINT MUST ONLY BE INSTALLED ON CLEAN SAND FILL, EVENLY SCREEDED,
WATERED AND WELL COMPACTED TO A MINIMUM DEPTH OF 500mm AND 90% MODIFIED MAXIMUM DRY DENSITY.
(OR TO ENGINEERS SPECIFICATIONS) CONCRETE SHOULD BE AT LEAST 20mpa (20:20:80 RECOMMENDED MIX)

LOCK JOINT & EXPANSION JOINT DETAIL FOR CYCLEWAY & PATH

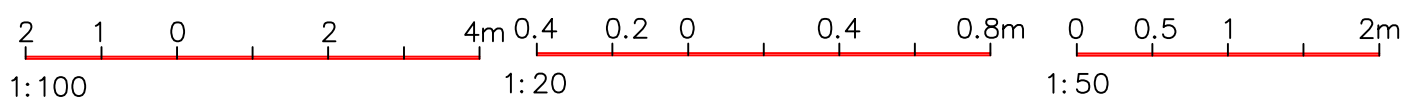


DETAIL 1



APPROVED SEALANT
REFER SPECIFICATION

- NOTES
1. FOUNDATION TO BE COMPACTED TO MINIMUM 50% MODIFIED MDD TO A MIN DEPTH OF 500mm
 2. ALL CONCRETE FOR FOOTPATH CONSTRUCTION TO BE A MINIMUM OF 20MPa, 20mm AGGREGATE AND A MAXIMUM SLUMP OF 65mm
 3. MINIMUM THICKNESS 100mm
 4. BEDDING - SAND (100mm MINIMUM)
 5. EXPANSION JOINT EVERY 4.8m
 6. CONTRACTION JOINT EVERY 2.4m
 7. FINISH - BROOMED TO NON-SKID FINISH



No.	Revision-	Chk'd	App'd	Date

CITY OF COCKBURN WOULD
LIKE TO ACKNOWLEDGE AND
THANK GUTTERIDGEMASKINS
& DAVEY PTY. LTD. FOR
THEIR ASSISTANCE IN THE
PRODUCTION OF THESE
STANDARD DETAIL DRAWINGS

CITY OF COCKBURN
9 COLEVILLE CRESCENT, SPEARWOOD WA 6163
PHONE: (08) 9411 3444 FAX: (08) 9411 3416

DESIGNED	GHD	APPROVED		SCALE	AS SHOWN	JOB No	
DRAWN	KMF/SYC			DWG No	2423B03	SHEET No	06
CHECKED	KR	DATE		REV			