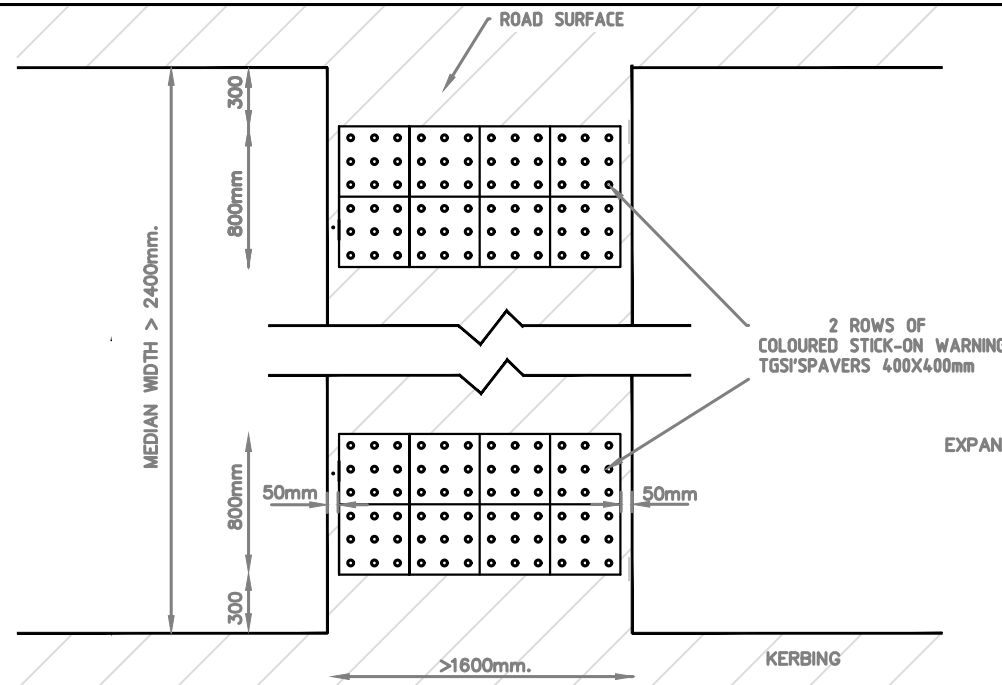
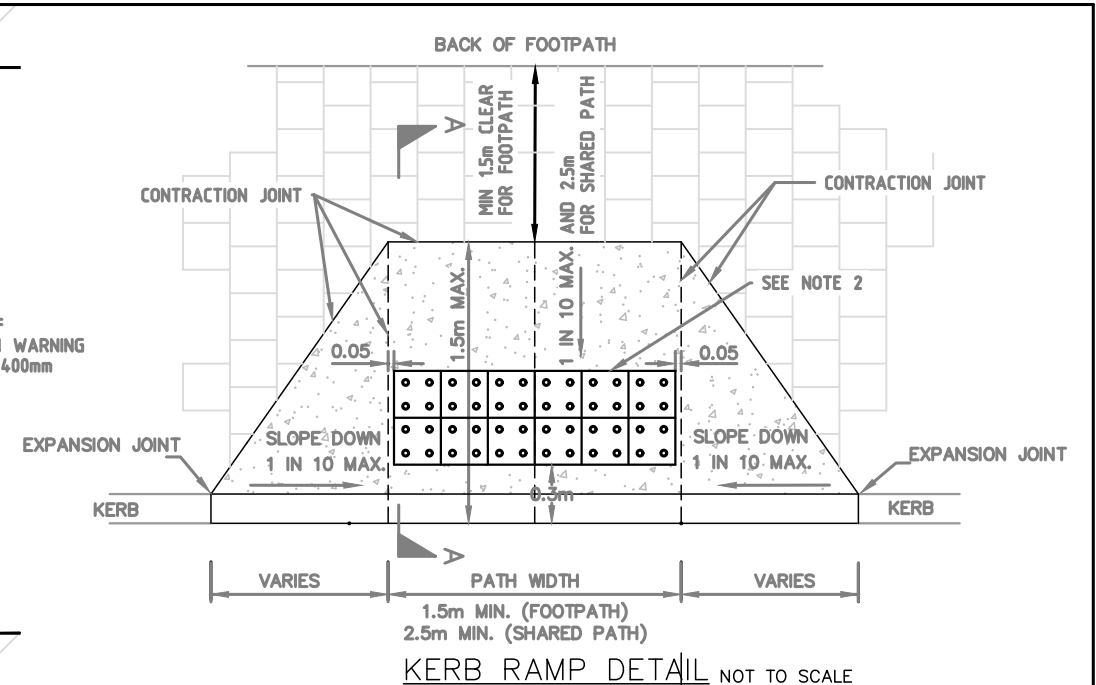


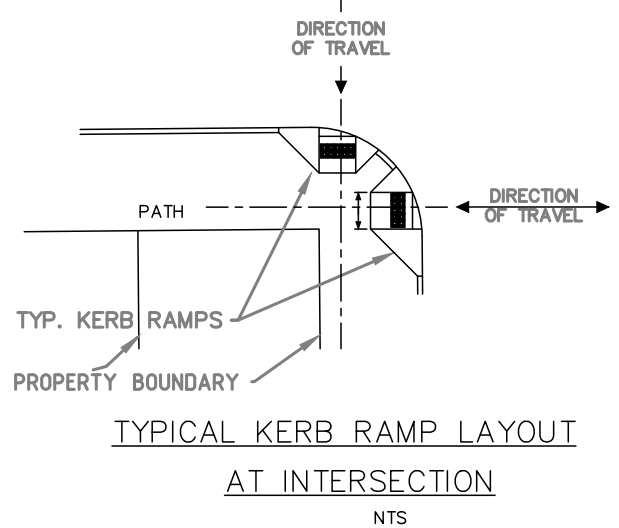
NARROW MEDIAN GAP DETAIL WIDTH 1500 – 2400mm
NOT TO SCALE



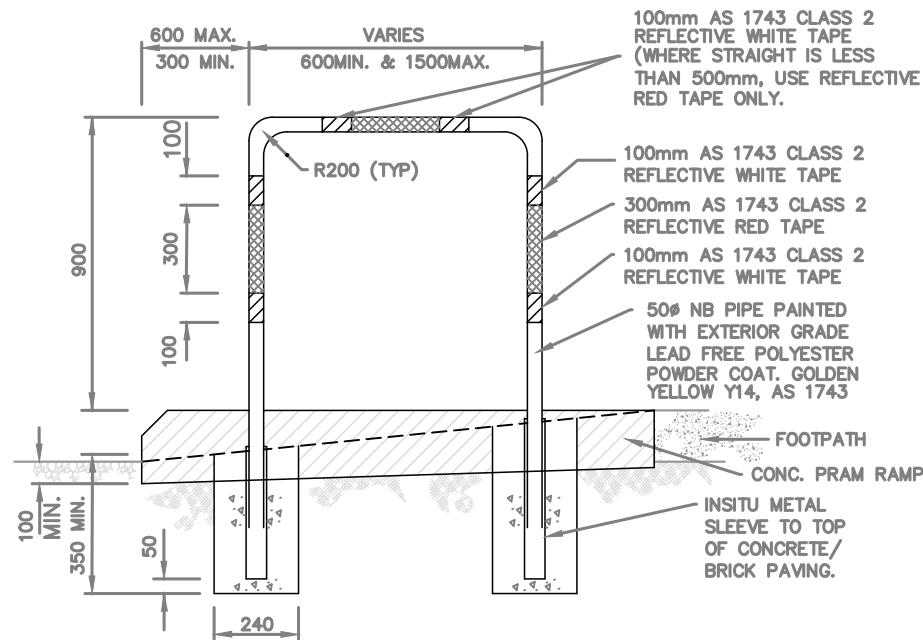
WIDE MEDIAN GAP DETAIL WIDTH >2400mm
NOT TO SCALE



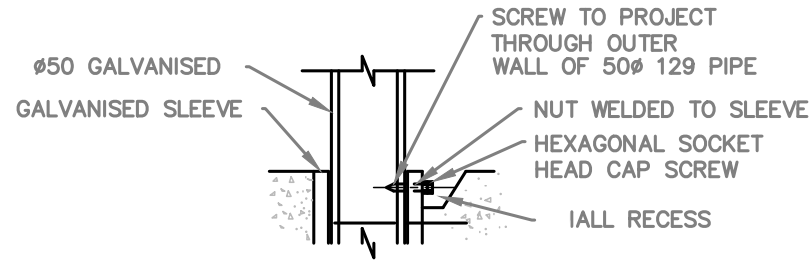
KERB RAMP DETAIL NOT TO SCALE



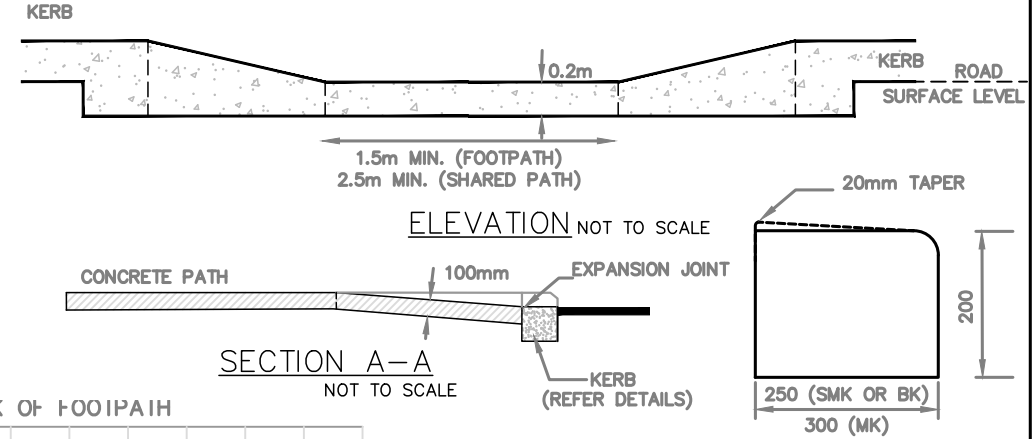
TYPICAL KERB RAMP LAYOUT
AT INTERSECTION
NTS



TYPICAL GRAB RAIL DETAIL
FOR USE AT KERB RAMP
NOT TO SCALE

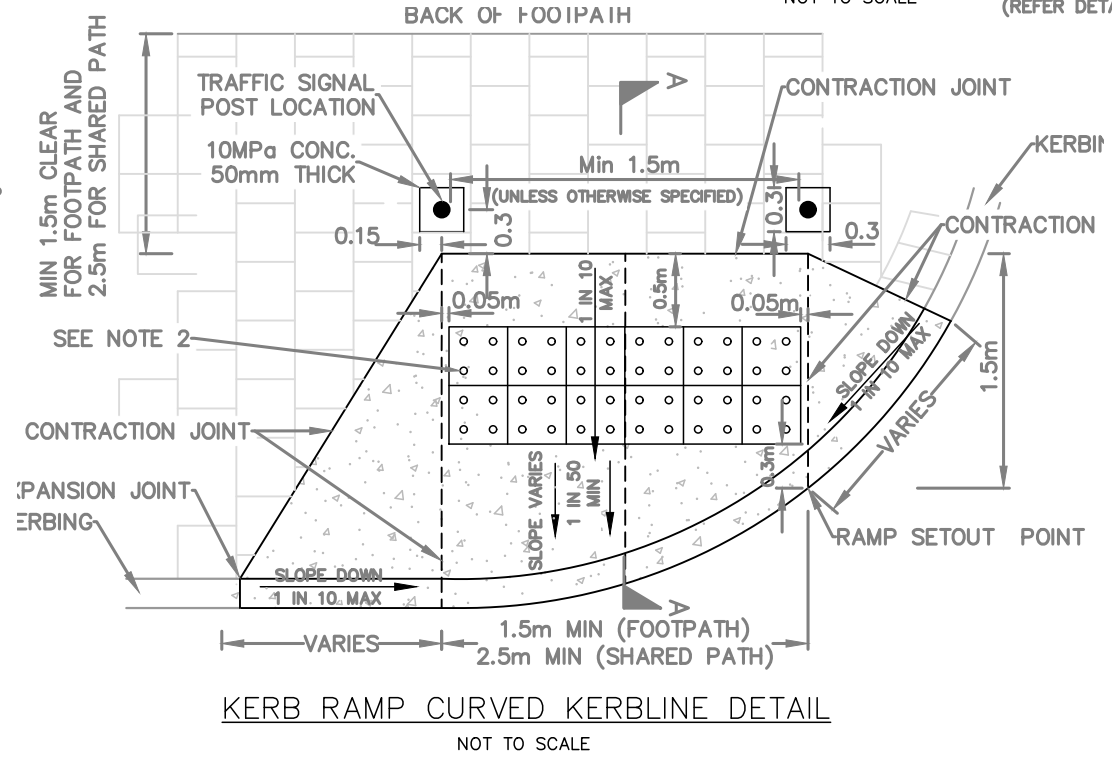


TYP. RAIL FIXING
NOT TO SCALE



SECTION A-A
NOT TO SCALE

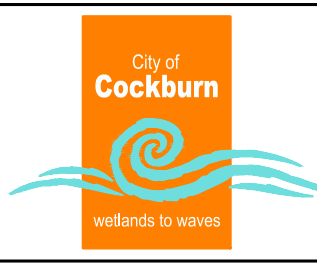
KERB DETAIL



KERB RAMP CURVED KERBLINE DETAIL
NOT TO SCALE

- NOTES:**
- HANDRAIL TO BE PLACED ON LEFT HAND SIDE WHEN FACING DIRECTION OF TRAVEL.
 - 2x ROWS OF 0.4m x 0.4m TACTILE GROUND SURFACE INDICATORS WITH A 30% MINIMUM LUMINANCE CONTRAST BETWEEN THE COLOUR OF THE TGSi AND THE COLOUR OF THE PATH AS STATED IN AS 1428.4-1992 CLAUSE 6.1. CONTRACTOR TO ENSURE THAT THE RAMP MATCHES THE DIRECTION OF THE PEDESTRIAN ROAD CROSSING.
 - EDGE OF RAMP SHALL BE FLUSH WITH ROAD PAVEMENT (ASPHALT OR SEAL) ACROSS THE DIRECTION OF PEDESTRIAN TRAFFIC TO PROVIDE A NON-SLIP SURFACE.
 - ALL VERGE AREAS SURROUNDING RAMP (EG FOOTPATH, PAVING, GRASS) TO BE REINSTATED TO NEW LEVELS FLUSH WITH RAMP EDGES.
 - WINGS TO APRON TO BE A MAX SLOPE OF 1 IN 10. IF 1 IN 10 SLOPE NOT POSSIBLE DUE TO OBSTRUCTION, SLOPE CAN BE INCREASED WITH THE APPROVAL OF COUNCIL.
 - KERB RAMPS SHALL BE MADE OF CONCRETE POURED IN-SITU AS PER FOOTPATH SPECIFICATION.

No	Revision	Chk'd	App'd	Date
D	PRAM RAMP DETAILS UPDATED			14/04/22
C				31/08/18
B				9/11/07
A				21/8/03



CITY OF COCKBURN
9 COLEVILLE CRESCENT,
SPEARWOOD WA 6163
PHONE: (08) 9411 3444
STANDARD DETAILS

DESIGNED		APPROVED		SCALE AS SHOWN		JOB No	
NS	NS						
DRAWN		DATE		DWG No		SHEET No	
NS				2423B03		07	
CHECKED						REV D	