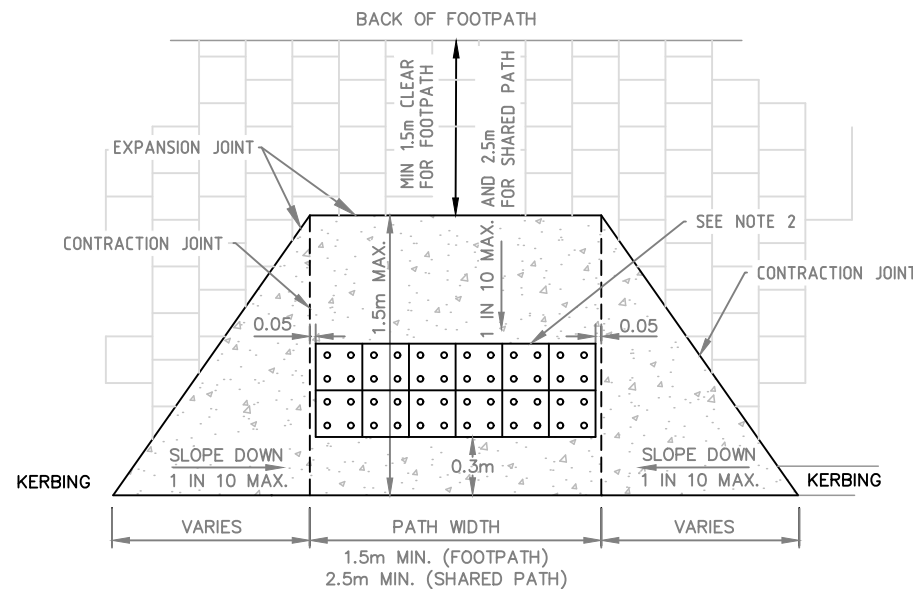
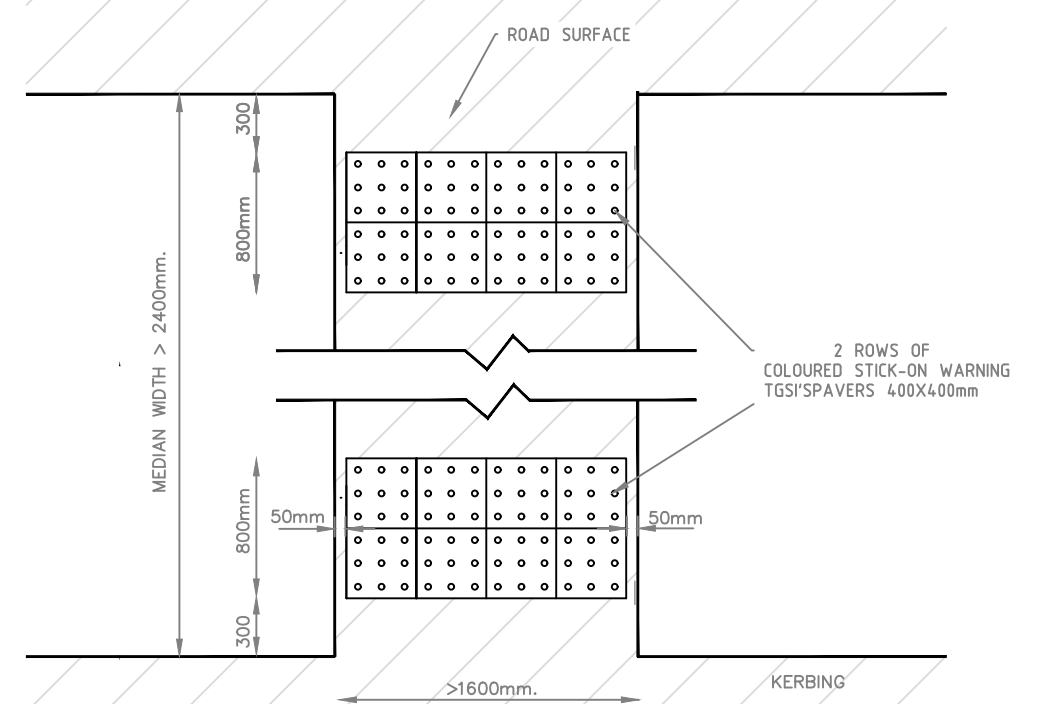


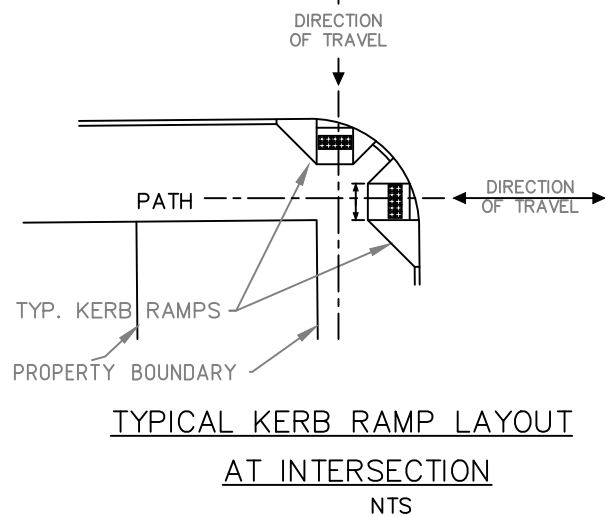
NARROW MEDIAN GAP DETAIL WIDTH 1500 – 2400mm
NOT TO SCALE



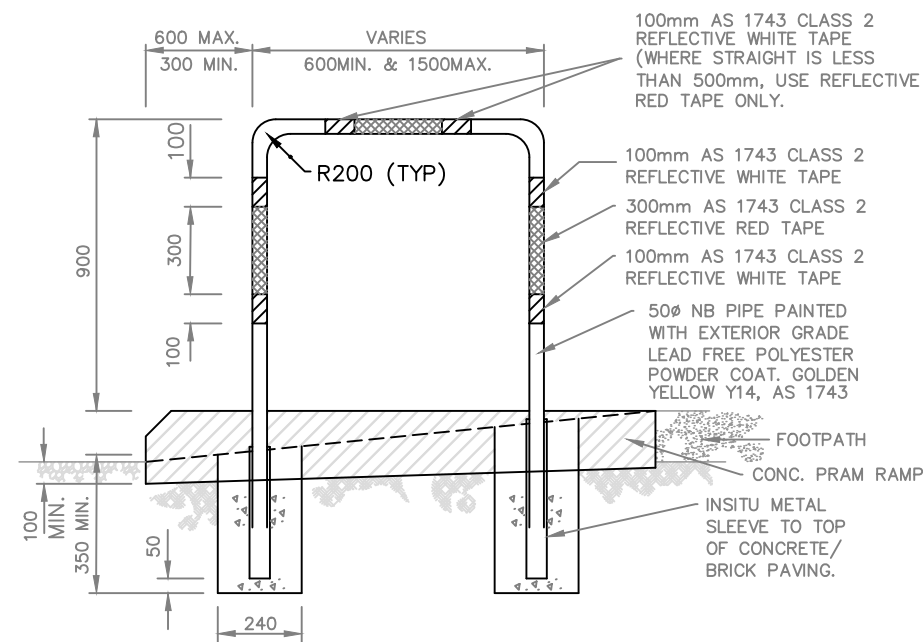
KERB RAMP DETAIL
NOT TO SCALE



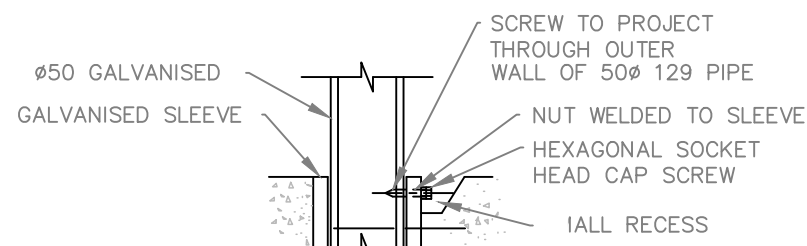
WIDE MEDIAN GAP DETAIL WIDTH >2400mm
NOT TO SCALE



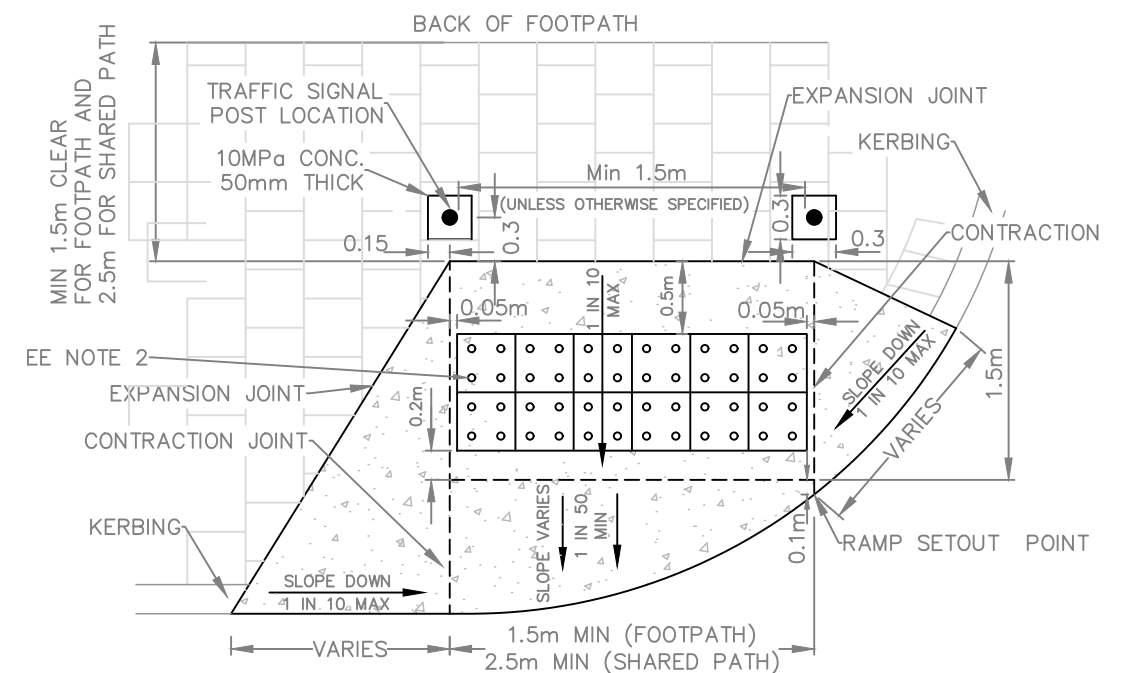
TYPICAL KERB RAMP LAYOUT AT INTERSECTION
NTS



TYPICAL GRAB RAIL DETAIL FOR USE AT KERB RAMP
NOT TO SCALE



TYP. RAIL FIXING
NOT TO SCALE



KERB RAMP CURVED KERBLINE DETAIL
NOT TO SCALE

- NOTES:**
- HANDRAIL TO BE PLACED ON LEFT HAND SIDE WHEN FACING DIRECTION OF TRAVEL.
 - 2x ROWS OF 0.4m x 0.4m TACTILE GROUND SURFACE INDICATORS WITH A 30% MINIMUM LUMINANCE CONTRAST BETWEEN THE COLOUR OF THE TGSI AND THE COLOUR OF THE PATH AS STATED IN AS 1428.4-1992 CLAUSE 6.1.
 - CONTRACTOR TO ENSURE THAT THE RAMP MATCHES THE DIRECTION OF THE PEDESTRIAN ROAD CROSSING. EDGE OF RAMP SHALL BE FLUSH WITH ROAD PAVEMENT (ASPHALT OR SEAL).
 - ACROSS THE DIRECTION OF PEDESTRIAN TRAFFIC TO PROVIDE A NON-SLIP SURFACE.
 - ALL VERGE AREAS SURROUNDING RAMP (EG FOOTPATH, PAVING, GRASS) TO BE REINSTATED TO NEW LEVELS FLUSH WITH RAMP EDGES.
 - WINGS TO APRON TO BE A MAX SLOPE OF 1 IN 10. IF 1 IN 10 SLOPE NOT POSSIBLE DUE TO OBSTRUCTION, SLOPE CAN BE INCREASED WITH THE APPROVAL OF COUNCIL.
 - KERB RAMPS SHALL BE MADE OF CONCRETE POURED IN-SITU.

No.	Revision	Chk'd	App'd	Date
C				31/08/18
B				9/11/07
A				21/8/03



CITY OF COCKBURN
9 COLEVILLE CRESCENT,
SPEARWOOD WA 6163
PHONE: (08) 9411 3444
STANDARD DETAILS

Title		ROADWORKS KERB RAMP & HANDRAIL	
DESIGNED	NS	APPROVED	SCALE AS SHOWN
DRAWN	NS	DATE	JOB No
CHECKED			DWG No
			SHEET No
			REV
			2423B03 07 C