

City of Cockburn Resource Recovery Calendar 2020/21

Thank you for recycling



City of
Cockburn
we listen to waves

Resource Recovery
Calendar 2020/21
Thank you for recycling

Your help
saves precious
resources

#beagoodsort

Christmas and New Year Bin Collection Dates
Over the festive season, your bins will NOT be collected on Friday, 25 December 2020 or 1 January 2021. Friday's collection during these two weeks will take place on Saturday, 26 December 2020 and 2 January 2021.

#BeAGoodSort

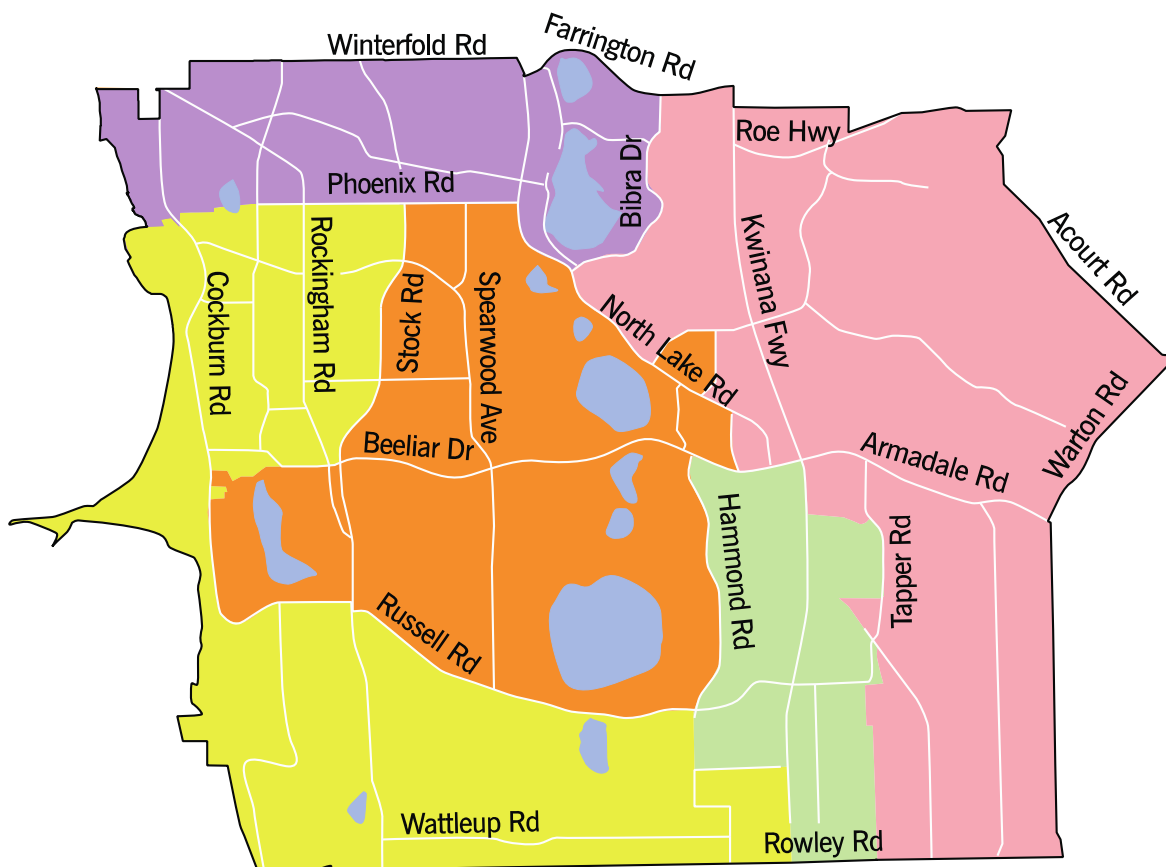
Christmas and New Year Bin Collection Dates

Over the festive season, your bins will **not** be collected on Friday, 25 December 2020 or 1 January 2021.

Friday's collection during these two weeks will take place on Saturday, 26 December 2020 and 2 January 2021.

Recycling & General Waste Bin Collection Map

The map below shows which day your recycling and general waste bins are collected. Please contact City of Cockburn for more information or clarification.



Legend

Mon Tues Wed Thur Fri

The map above is colour coded to show which day recycling and general waste bins are collected in each area.

Monday:

- Leeming
- Jandakot
- Treeby
- Banjup
- Part of North Lake – the area bounded by Bibra Drive, North Lake Road, Berrigan Drive, Kwinana Freeway, and Farrington Road.

Tuesday:

- Yangebup
- Cockburn Central
- Lake Coogee
- Munster
- Beeliar
- Part of Bibra Lake – the area bounded by North Lake Road, Phoenix Road, Stock Road, Barrington Street, and Meller Road.
- Part of Success – the area bounded by Hammond Road, Jacksonia Promenade, and Branch Circus.

Wednesday:

- Hamilton Hill
- Coolbellup
- Part of North Lake – the area bounded by Phoenix Road, North Lake Road, Forrest Road, and Stock Road

- Part of North Coogee – the area extending from Phoenix Road towards the western and northern boundaries of the City of Cockburn.

Thursday:

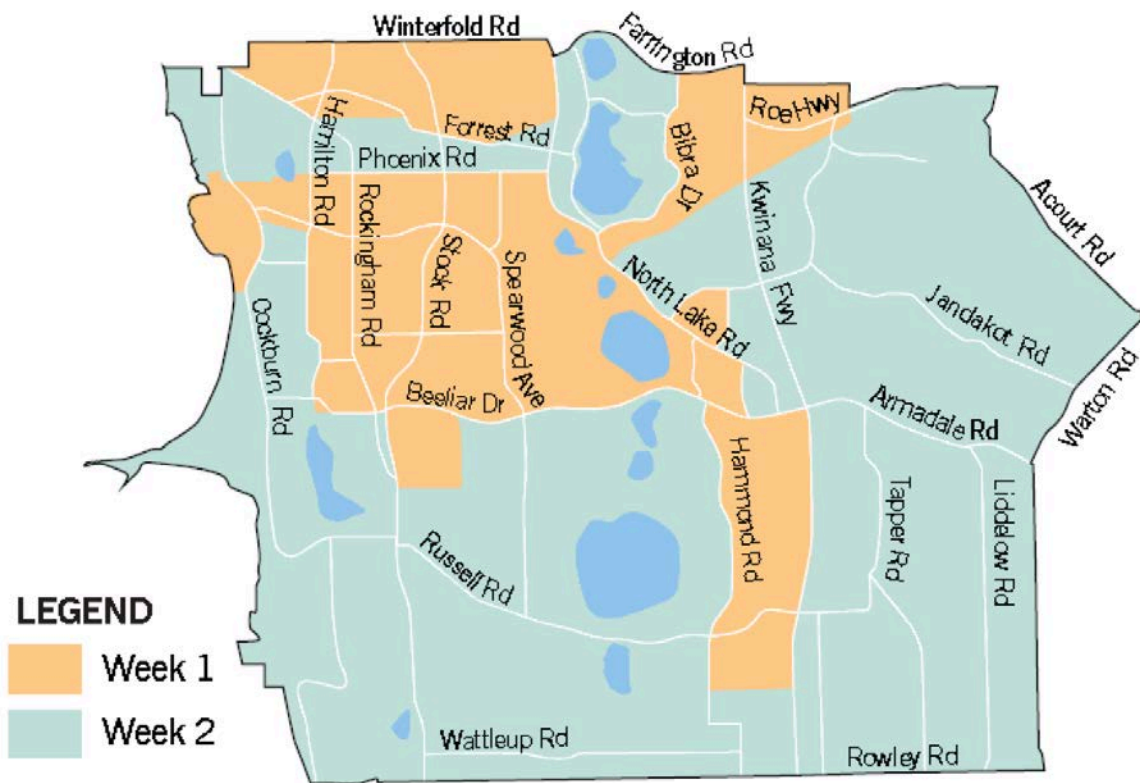
- Spearwood
- Coogee
- Henderson
- Wattleup
- Part of North Coogee – the area extending south from Phoenix Road.
- Part of Hammond Park – the area extending south from Gaebler Road.

Friday:

- Atwell
- Aubin Grove
- Part of Success - the area bounded by Beeliar Drive, Kwinana Freeway, Russell Road, and Hammond Road
- Part of Hammond Park - the area extending north from Gaebler Road.

Garden Organics Bin Collection Map

The map below shows which week your garden organics bin is collected, if you have three bins. Please contact City of Cockburn for more information or clarification.



The map above is colour coded to show which alternating week (Week 1 or Week 2) garden organics bins are collected in each area that has three bins.

Week 1:

- Spearwood
- Bibra Lake
- Yangebup
- Leeming
- Part of Coolbellup – the area extending north from Forrest Road.
- Part of Success – the area bounded by Hammond Road, Jacksonia Promenade, and Branch Circus.
- Part of North Lake – the area bounded by Bibra Drive, North Lake Road, Meller Road, Kwinana Freeway, and Farrington Road.
- Part of Hamilton Hill – the area extending north from Forrest Road and the corner of Carrington Street the Rockingham Road.

- Part of North Coogee – the area extending south from Phoenix Road.

Week 2:

- South Lake
- Jandakot
- Treeby
- Banjup
- Beeliar
- Munster
- Coogee
- Henderson
- Lake Coogee
- Part of Success – the area bounded by Russell Road, Hammond Road, Beeliar Drive, and Kwinana Freeway.
- Part of Hamilton Hill – the area between Forrest Road and Phoenix Road.
- Part of Coolbellup – the area bounded by Forrest Road, North Lake Road, Phoenix Road, and Stock Road.
- Part of North Lake – the area bounded by Farrington Road, Bibra Drive, and North Lake Road.

July 2020

S	M	T	W	T	F	S
			1	2	3	4
5	6	7	8	9	10	11
12	13	14	15	16	17	18
19	20	21	22	23	24	25
26	27	28	29	30	31	

August 2020

S	M	T	W	T	F	S
						1
2	3	4	5	6	7	8
9	10	11	12	13	14	15
16	17	18	19	20	21	22
23	24	25	26	27	28	29

September 2020

S	M	T	W	T	F	S
30	31	1	2	3	4	5
6	7	8	9	10	11	12
13	14	15	16	17	18	19
20	21	22	23	24	25	26
27	28	29	30			

October 2020

S	M	T	W	T	F	S
				1	2	3
4	5	6	7	8	9	10
11	12	13	14	15	16	17
18	19	20	21	22	23	24
25	26	27	28	29	30	31

November 2020

S	M	T	W	T	F	S
1	2	3	4	5	6	7
8	9	10	11	12	13	14
15	16	17	18	19	20	21
22	23	24	25	26	27	28
29	30					

December 2020

S	M	T	W	T	F	S
		1	2	3	4	5
6	7	8	9	10	11	12
13	14	15	16	17	18	19
20	21	22	23	24	25	26
27	28	29	30	31		

January 2021

S	M	T	W	T	F	S
					X	2
3	4	5	6	7	8	9
10	11	12	13	14	15	16
17	18	19	20	21	22	23
24	25	26	27	28	29	30

February 2021

S	M	T	W	T	F	S
31	1	2	3	4	5	6
7	8	9	10	11	12	13
14	15	16	17	18	19	20
21	22	23	24	25	26	27
28						

March 2021

S	M	T	W	T	F	S
	1	2	3	4	5	6
7	8	9	10	11	12	13
14	15	16	17	18	19	20
21	22	23	24	25	26	27
28	29	30	31			

April 2021

S	M	T	W	T	F	S
				1	2	3
4	5	6	7	8	9	10
11	12	13	14	15	16	17
18	19	20	21	22	23	24
25	26	27	28	29	30	

May 2021

S	M	T	W	T	F	S
						1
2	3	4	5	6	7	8
9	10	11	12	13	14	15
16	17	18	19	20	21	22
23	24	25	26	27	28	29

June 2021

S	M	T	W	T	F	S
30	31	1	2	3	4	5
6	7	8	9	10	11	12
13	14	15	16	17	18	19
20	21	22	23	24	25	26
27	28	29	30			



No service on these public holidays and collections will take place on the following day. Collections for the remainder of the week will be one day late.

The first week of July 2020 is Week 2.

The second week of July 2020 (week starting Monday, 6 July) is Week 1.

From there, Weeks 1 and 2 alternate.

Note that there is no service on public holidays, i.e. Friday 25 December 2020 and Friday 1 January 2021. Collections will take place on the following day. Collections for the remainder of the week will be one day late.

Bin Collection

Your Recycling Bin (Weekly)



- ✓ Hard plastic bottles and containers, aluminium and steel cans, glass bottles and jars, paper and cardboard
- ✓ Place items loose in your bin
- ✓ Remove lids
- ✓ Rinse items
- ✗ **No nappies**

General Waste Bin (Weekly)



- ✓ All food scraps, nappies, hygiene products and other non-recyclable materials
- ✓ Garden organics (if you are on the two bin system)
- ✓ Soft plastic (or take to REDcycle drop off point at the supermarket)
- ✗ **No recyclables**
- ✗ **No hazardous waste**

Your Garden Organics Bin (Fortnightly)



- ✓ Only natural materials that grow in the garden can be placed in this bin, including prunings, twigs, lawn clippings etc.
- ✓ Branches should be no thicker than 60mm
- ✗ **No recyclables**
- ✗ **No food waste**

Tips for Using Your Bins

Bin Placement

To assist us in emptying your bins safely, please:

- Place bins out by 6am on the day of collection. Your bins may not be collected at the same time every week
- Place bins within 1.5m of the kerb with bin handles facing towards your property and lid handles facing the road
- Place bins 30cm apart to allow access for the waste truck arm

- Place smaller 140L bin to left hand side of other bins (when viewed from road)
- Do not overfill your bin – the trucks cannot lift bins weighing over 70kg
- Keep bin lids closed to ensure waste doesn't blow out or spill onto the verge
- Place your bin clear of obstacles e.g. cars, trees or overhanging branches
- Do not place hot ash, liquids, oil, paint or solvents in your bins as they will damage bins, trucks and the environment
- Return bins to your property as soon as possible after they are emptied
- Store bins in a shaded area on private property not visible from the road
- Clean bins regularly
- Alternate collection arrangements can be made to assist frail, aged and disabled residents
- Unpaid or non-Cockburn bins will not be collected.



Resource Recovery Guide

This guide explains where you should dispose of your waste items.

Those marked with an * can be disposed of for free at Henderson Waste Recovery Park.

To find charities accepting donations, visit GIV.org.au.

To find out more about REDcycle soft plastic recycling, visit REDcycle:redcycle.net.au.

A

- **Acids*** – Henderson Waste Recovery Park
- **Aerosol cans*** – Henderson Waste Recovery Park or City Administration Building
- **Aluminium cans** – Recycling bin
- **Ammonia*** – Henderson Waste Recovery Park
- **Animal droppings** – General waste bin
- **Antennas** – Bulk Waste Collection
- **Asbestos** – Henderson Waste Recovery Park
- **Ash (cold)** – General waste bin
- **Auto Batteries** – Henderson Waste Recovery Park or retailer

B

- **Balloons** – General waste bin
- **Band-Aids** – General waste bin
- **Barbecues** – Henderson Waste Recovery Park or Bulk Waste Collection

- **Barbecue charcoal (cold)** – General Waste bin
- **Baskets (cane/wooden/plastic)** – Henderson Waste Recovery Park or Bulk Waste Collection
- **Batteries*** – Henderson Waste Recovery Park or any of the City’s libraries or any Officeworks Outlet
- **Beer cartons** – Recycling bin
- **Bicycles and parts** – Henderson Waste Recovery Park or Bulk Waste Collection
- **Blankets** – Give to charity or general waste bin
- **Bleaches*** – Henderson Waste Recovery Park
- **Blinds** – Henderson Waste Recovery Park or Bulk Waste Collection
- **Books** – Give to charity or general waste bin
- **Bottles (plastic/glass)** – Recycling bin
- **Brake fluid*** – Henderson Waste Recovery Park
- **Bricks** – Henderson Waste Recovery Park
- **Broken glass** – Recycling bin
- **Bubble wrap** – REDcycle drop off point or general waste bin
- **Building materials/waste** – Henderson Waste Recovery Park
- **Bulky items** – Henderson Waste Recovery Park or Bulk Waste Collection

C

- **Candles and wax** – General waste bin
- **Cans (aluminium/steel)** – Recycling bin
- **Cat litter** – General waste bin

- **Cardboard** – Recycling bin
- **Car parts** – Henderson Waste Recovery Park
- **Carpet/underlay** – Henderson Waste Recovery Park or Bulk Waste Collection
- **Cartons (juice/milk etc - silver lined Tetra Pak)** – General waste bin
- **Cartons (juice/milk etc - not silver lined)** – Recycling bin
- **Cassette tapes** – General waste
- **CDs and DVDs** – General waste
- **Cellophane** – REDcycle drop off point or general waste bin
- **Ceramic (broken plates, tiles, pots)** – General waste bin
- **Cereal boxes** – Recycling bin
- **Chemical drums (triple rinsed)** – Henderson Waste Recovery Park
- **Christmas decorations** – General waste bin
- **Cigarette butts** – General waste bin
- **Cleaning products*** – Henderson Waste Recovery Park
- **Cling wrap (soiled)** – General waste bin
- **Clothing/fabric (reusable)** – Give to charity
- **Clothing/fabric (not reusable)** – General waste bin
- **Cockroach bait*** – Henderson Waste Recovery Park
- **Coffee cups (disposable)** – General waste bin
- **Coffee jars/cans** – Recycling bin
- **Coffee pods** – General waste bin

- **Compostable packaging** – General waste bin
- **Computer components/accessories*** – Henderson Waste Recovery Park
- **Computer paper** – Recycling bin
- **Concrete** – Henderson Waste Recovery Park
- **Condoms** – General waste bin
- **Cooking fat (solid)** – General waste bin
- **Cork** – General waste bin
- **Cotton wool/buds** – General waste bin
- **Cups and saucers** – General waste bin
- **Cutlery (metal)** – General waste bin or give to charity
- **Cutlery (plastic)** – General waste bin

D

- **Dirt and soil** – Henderson Waste Recovery Park
- **Disposable nappies** – General waste bin
- **Disposable razors** – General waste bin

E

- **Egg cartons** – Recycling bin
- **Electrical appliances** – Henderson Waste Recovery Park or Bulk Waste Collection
- **Electrical cables** – Henderson Waste Recovery Park or Bulk Waste Collection
- **Electrical equipment** – Henderson Waste Recovery Park or Bulk Waste Collection

- **Envelopes** – Recycling bin
- **EPIRB locator beacons*** – Henderson Waste Recovery Park

F

- **Fertiliser*** – Henderson Waste Recovery Park
- **Fire extinguishers*** – Henderson Waste Recovery Park
- **Flares*** – Henderson Waste Recovery Park
- **Flooring** – Henderson Waste Recovery Park
- **Fly tape** – General waste bin
- **Foil (clean)** – Recycling bin
- **Food scraps** – General waste bin
- **Fridges** – Henderson Waste Recovery Park or Bulk Waste Collection
- **Furniture (broken)** – Henderson Waste Recovery Park or Bulk Waste Collection
- **Furniture (intact)** – Give to charity

G

- **Garden chemicals/poison*** – Henderson Waste Recovery Park
- **Garden waste (small prunings or grass clippings)** – General waste bin (two bin system) or garden organics bin (three bin system)
- **Garden waste (large)** – Henderson Waste Recovery Park or Bulk Garden Organics Collection
- **Gas cylinders*** – Henderson Waste Recovery Park
- **Glass bottles/jars** – Recycling bin
- **Glossy magazines/brochures** – Recycling bin

- **Greaseproof paper** – General waste bin

H

- **Hose (garden)** – Henderson Waste Recovery Park or Bulk Waste Collection

I

- **Ice cream containers (plastic)** – Recycling bin
- **Insecticides*** – Henderson Waste Recovery Park

J

- **Juice bottles (plastic)** – Recycling bin
- **Junk (small items) e.g. brick-a-brac** – General waste bin
- **Junk (too large for bin)** – Henderson Waste Recovery Park or Bulk Waste Collection
- **Junk mail** – Recycling bin

L

- **Lids (metal)** – Recycling bin
- **Lids (plastic)** – General waste bin
- **Light globes/fluorescent tubes*** – Henderson Waste Recovery Park or any of City's libraries

M

- **Magazines** – Recycling bin
- **Meat trays (coloured or clear)** – General waste bin
- **Meat tray pads** – General waste bin

- **Medicines** – Return to pharmacy
- **Mineral turpentine*** – Henderson Waste Recovery Park
- **Mobile phones** – Any of City’s libraries
- **Motor oil*** – Henderson Waste Recovery Park

N

- **Nappies (disposable)** – General waste bin
- **Needles** – Return to pharmacy
- **Newspapers** – Recycling bin

O

- **Oil (cooking)** – General waste bin
- **Oil (motor)*** – Henderson Waste Recovery Park

P

- **Paint*** – Henderson Waste Recovery Park
- **Paint tins** – Henderson Waste Recovery Park
- **Paper (not shredded)** – Recycling bin
- **Paper (shredded)** – General waste bin
- **Pens/biros/textas/pencils** – General waste bin
- **Pest control concentrates*** – Henderson Waste Recovery Park
- **Petrol/flammable liquids*** – Henderson Waste Recovery Park
- **Phone books** – General waste bin
- **Picture frames (broken)** – General waste bin

- **Picture frames (intact)** – Give to charity
- **Pizza boxes (clean)** – Recycling bin
- **Pizza boxes (soiled)** – General waste bin
- **Placemats** – General waste bin
- **Plastic containers/punnets** – Recycling bin
- **Plastic containers (large)** – Henderson Waste Recovery Park or Bulk Waste Collection
- **Plastic cutlery** – General waste bin
- **Plastic (soft, scrunchable)** – REDcycle drop off point or general waste bin
- **Plastic plant pots** – General waste bin
- **Plate glass** – Henderson Waste Recovery Park
- **Poisons (liquid/solid)*** – Henderson Waste Recovery Park
- **Polystyrene (small items)** – General waste bin
- **Polystyrene (large items)** – Henderson Waste Recovery Park
- **Pool chemicals*** – Henderson Waste Recovery Park
- **Printer cartridges** – Any of City libraries

R

- **Rat poison*** – Henderson Waste Recovery Park
- **Rope** – Henderson Waste Recovery Park or Bulk Waste Collection
- **Rubber tyres** – Henderson Waste Recovery Park

S

- **Sanitary pads** – General waste bin

- **Seedling containers** – General waste bin
- **Shoes (reusable)** – Give to charity
- **Shoes (not reusable)** – General waste bin
- **Smoke alarms*** – Henderson Waste Recovery Park
- **Soap** – General waste bin
- **Soil** – Henderson Waste Recovery Park

T

- **Takeaway food containers (plastic)** – Recycling bin
- **Takeaway food containers (polystyrene)** – General waste bin
- **Tampons** – General waste bin
- **Terracotta tiles/pots** – General waste bin
- **Timber** – Henderson Waste Recovery Park or Bulk Waste Collection
- **Timber (treated)** – Henderson Waste Recovery Park
- **Tissues** – General waste bin
- **Toothbrushes** – General waste bin
- **Toothpaste tubes** – General waste bin
- **Toys (broken)** – General waste bin
- **Toys (intact)** – Give to charity
- **Tyres** – Henderson Waste Recovery Park

V

- **Vacuum cleaner dust** – General waste bin

- **Vinyl school bags (broken)** –General waste bin
- **Vinyl school bags (intact)** – Give to charity
- **Other vinyl (kitchen tiles etc)** – General waste bin

W

- **Waxed cardboard** – General waste bin
- **Waxed paper** – General waste bin
- **Weeds** – General waste bin (two bin system) or garden waste bin (three bin system)
- **White goods** – Henderson Waste Recovery Park or Bulk Waste Collection
- **Windowpanes** – Henderson Waste Recovery Park
- **Wood (garden prunings)** – General waste bin (two bin system) or garden waste bin (three bin system)
- **Wooden planks/ furniture** – Henderson Waste Recovery Park or Bulk Waste Collection
- **Wrapping paper** – Recycling bin

X

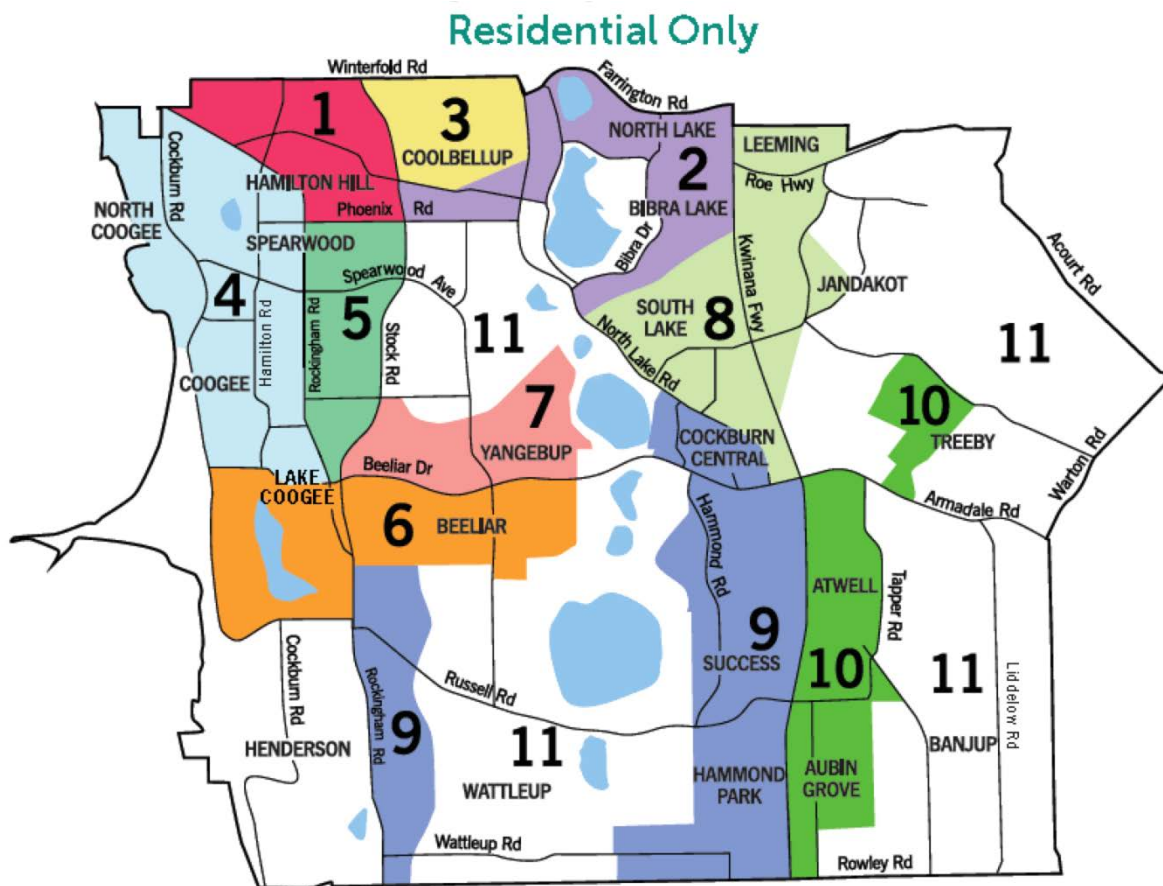
- **X-rays*** – Henderson Waste Recovery Park



Bulk Waste & Bulk Garden Organics Collection

Place all verge material out by Monday 6am of the collection week. Do not place verge material out more than **three** days before the collection begins for your area.

Residential Only



Please ensure you are aware of your correct area by number and colour.

The image above is colour coded map of the City of Cockburn divided into 11 verge collection areas. Please contact City of Cockburn for more information or clarification.

Hamilton Hill, North Coogee, Coogee, Lake Coogee, Henderson, Spearwood, Coolbellup, North Lake, Bibra Lake, South Lake, Yangebup, Munster, Beeliar, Wattleup, Cockburn Central, Success, Hammond Park, Aubin Grove, Atwell, Banjup, Treeby, Jandakot, and part of Leeming fall within the City of Cockburn and are therefore represented in the verge map.

Area 1

Area 1 includes the suburb of Hamilton Hill.

Its boundaries are Winterfold Road, Stock Road, Phoenix Road, Rockingham Road, and Hampton Road.

Carrington Street and Forrest Road run through Area 1. Area 1 shares borders with Areas 2, 3, 4, 5, and 11.

Area 2

Area 2 includes the suburbs of Coolbellup, North Lake, and Bibra Lake.

Its boundaries are Farrington Road, Kwinana Freeway, Meller Road, Bibra Drive, Hope Road, Progress Drive, North Lake Road, Phoenix Road, Stock Road, and Forrest Road.

North Lake (the lake, differentiated from the suburb) is located within Area 2. Area 2 shares borders with Areas 1, 3, 8, and 11.

Area 3

Area 3 includes the suburb of Coolbellup.

Its boundaries are Winterfold Road, North Lake Road, Forrest Road, and Stock Road.

Area 3 shares borders with Areas 1 and 2.

Area 4

Area 4 includes the suburbs of Hamilton Hill, North Coogee, Coogee, and Spearwood.

Its boundaries are Rockingham Road, Mayor Road, Cockburn Road, and the west coast suburb boundary of North Coogee.

Manning Lake and two other lakes are located within Area 4. Cockburn Road, Spearwood Avenue, and Hamilton Road run through Area 4. Area 4 shares borders with Areas 1, 5, 6, and 11.

Area 5

Area 5 includes the suburbs of Spearwood and Yangebup.

Its boundaries are Phoenix Road, Stock Road, Beeliar Drive, and Rockingham Road.

Spearwood Avenue and Barrington Street run through Area 5. Area 5 shares borders with Areas 1, 4, 6, 7, and 11.

Area 6

Area 6 includes the suburbs of Coogee, Lake Coogee, and Yangebup.

Its boundaries are Mayor Road, Beeliar Drive, Senecio Lane, Fancote Avenue, Fanstone Avenue, Rockingham Road, Russell Road, and Cockburn Road.

Lake Coogee (the lake, differentiated from the suburb) and two other lakes are located within Area 6. Area 6 shares borders with Areas 4, 5, 7, 9, and 11.

Area 7

Area 7 includes the suburb of Yangebup.

Its boundaries are Meller Road, Pelican Ramble, Pioneer Drive, Beeliar Drive, Stock Road, and Barrington Street.

Area 7 shares borders with Areas 5, 6, and 11.

Area 8

Area 8 includes the suburbs of South Lake, Leeming, Jandakot, and Cockburn Central.

Its boundaries include and Prinsep Road, Kwinana Freeway, Beeliar Drive, North Lake Road, Meller Road, and the northern boundary of the City of Cockburn – including Demasson Rise, Barcombe Way, Allendale Entrance and Berswick Grove.

Two lakes are located within Area 8. Kwinana Freeway, Berrigan Drive, and Karel Avenue run through Area 8. Area 8 shares borders with Areas 2, 9, and 11.

Area 9

Area 9 includes the suburbs of Munster, Wattleup, Cockburn Central, Success, and Hammond Park.

Area 9 is divided into two sections.

The first section includes Munster and Wattleup. Its boundaries are Fanstone Avenue, Moylan Road, Dalison Avenue, Rowley Road, and Rockingham Road.

Russell Road and Wattleup Road run through this section of Area 9. This section shares borders with Areas 6 and 11.

The second section includes Cockburn Central, Success, and Hammond Park. Its boundaries are North Lake Road, Prinsep Road, Beeliar Drive, Kwinana Freeway, Rowley Road, Jacksonia Promenade, Branch Circus, and Tamara Drive.

Four small lakes are located within this section of Area 9. Hammond Road, Russell Road, and Wattleup Road run through this section, which shares borders with Areas 8, 10, and 11.

Area 10

Area 10 includes the suburbs of Treeby, Atwell, and Aubin Grove.

Area 10 is divided into two sections.

The first section includes Treeby. Its boundaries are Jandakot Road, Armadale Road, Dollier Street, and Solomon Road. This section of Area 10 shares a border with Area 11.

The second section includes the suburbs of Atwell and Aubin Grove. Its boundaries are Armadale Road, Tapper Road, Beenyup Road, Lyon Road, Rowley Road, and Kwinana Freeway. Several small lakes are located within this section, which shares borders with Areas 9 and 11.

Area 11

Area 11 includes the suburbs of Coogee, Henderson, Munster, Yangebup, Bibra Lake, Beeliar, Wattleup, Treeby, Jandakot, Leeming, and Banjup.

Area 11 is divided into three sections.

The first section includes Coogee and Henderson. Its boundaries are Cockburn Road, Russell Road, Rockingham Road, and the west coast suburb boundaries of Coogee and Henderson.

A small lake is located in this section and Cockburn Road runs through it.

The second section includes Yangebup, Bibra Lake, Beeliar, Munster, and Wattleup. Its boundaries are North Lake Road, Tamara Drive, Beeliar Drive, Branch Circus, Jacksonia Promenade, Rowley Road, Dalison Avenue, Moylan Road, Fancote Avenue, Senecio Lane, Pioneer Drive, Pelican Ramble, Meller Road, Barrington Street, Stock Road, Phoenix Road, Progress Drive, Hope Road, and Bibra Drive.

Eight lakes, including Bibra Lake, Kogolup Lake, Thomsons Lake, and Banganup Lake are located in this section of Area 11. North Lake Road, Beeliar Drive, Russell Road, and Wattleup Road also run through this section, which shares borders with Areas 2, 5, 6, 7, 8, and 9.

The third section includes Leeming, Jandakot, Treeby, and Banjup. Its boundaries include Rowley Road and the eastern border of City of Cockburn – Acourt Road, Johnston Road and Leeming Road, Roe Highway, and Fernleaf Court.

Karel Avenue, Farrington Road, Roe Highway, Armadale Road, Ranford Road, Nicholson Road, Acourt Road, Jandakot Road, Warton Road, and Liddelow Road run through this section of Area 11. There are three small lakes in this section.

Bulk Collection Dates

No more than 2 cubic metres.

Area	Bulk Waste 1 (2020)	Bulk Garden Organics 1 (2020)	Bulk Waste 2 (2021)	Bulk Garden Organics 2 (2021)
1	Week starting 6 July	Week starting 5 October	Week starting 4 January	Week starting 19 April
2	Week starting 13 July	Week starting 12 October	Week starting 11 January	Week starting 26 April
3	Week starting 20 July	Week starting 19 October	Week starting 25 January	Week starting 3 May
4	Week starting 27 July	Week starting 26 October	Week starting 1 February	Week starting 10 May

Area	Bulk Waste 1 (2020)	Bulk Garden Organics 1 (2020)	Bulk Waste 2 (2021)	Bulk Garden Organics 2 (2021)
5	Week starting 3 August	Week starting 2 November	Week starting 8 February	Week starting 17 May
6	Week starting 10 August	Week starting 9 November	Week starting 15 February	Week starting 24 May
7	Week starting 17 August	Week starting 16 November	Week starting 22 February	Week starting 31 May
8	Week starting 24 August	Week starting 23 November	Week starting 1 March	Week starting 7 June
9	Week starting 7 September	Week starting 7 December	Week starting 15 March	Week starting 14 June
10	Week starting 14 September	Week starting 14 December	Week starting 29 March	Week starting 21 June

Area 11: Rural Collection will be weeks starting 28 September 2020 and 12 April 2021

Important information for verge collections

Details on how to present verge waste:

- ✓ Do not place verge material out more than **three days** before the collection date for your area. A non-compliance notice will be issued for early “set outs”
- ✓ Ensure your verge material is presented before 6am on the Monday of your collection week. The City will not return for waste that was set out late
- ✓ Place away from walls, fences, water meters, power poles and letterboxes
- ✓ Separate white goods, steel, mattresses and e-waste from other verge collection items for recycling
- ✓ Keep checking your pile to ensure no illegal dumping has occurred (refer to **Bulk Garden Organics Collections** and **Bulk Waste Collections** below)

- ✘ Do not place on vacant land, reserves or parklands
- ✘ Do not place on artificial turf. Contact the City for an alternative pick up location
- ✘ Do not place under trees or over sprinklers
- ✘ Do not follow your neighbour – check your collection date

If your bulk waste or bulk garden organics are not compliant, we will not return to collect them.

No more than 2 cubic metres.



Bulk Garden Organics Collections

The following items will be collected:

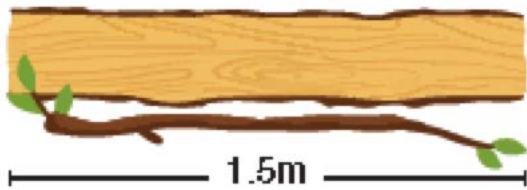
- ✓ Prunings up to 1.5m in length and 30cm in diameter

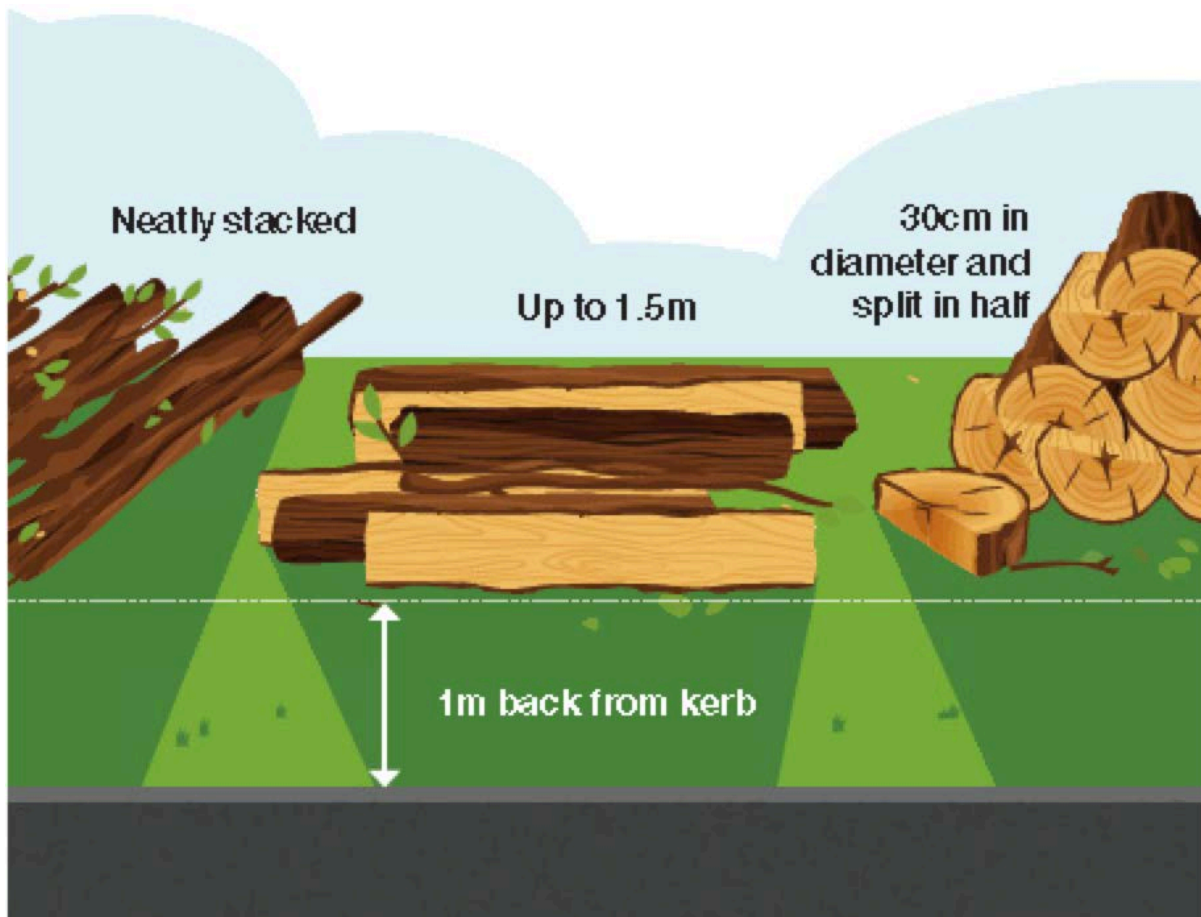
Your bulk garden organics are taken to the Henderson Waste Recovery Park where they are processed into mulch. The mulch is free and available to people visiting HWRP.

The following items will not be collected:

- ✘ Bags or boxes of leaves / grass clippings
- ✘ Loose leaves / grass clippings

- × Dug out lawn
- × General waste, junk or white goods
- × Sand or soil materials
- × Stumps or palm logs
- × Weeds and root materials
- × No more than 2 cubic metres





Bulk Waste Collections

The following items **will** be collected:

- ✓ General bulk waste e.g. furniture, mattresses

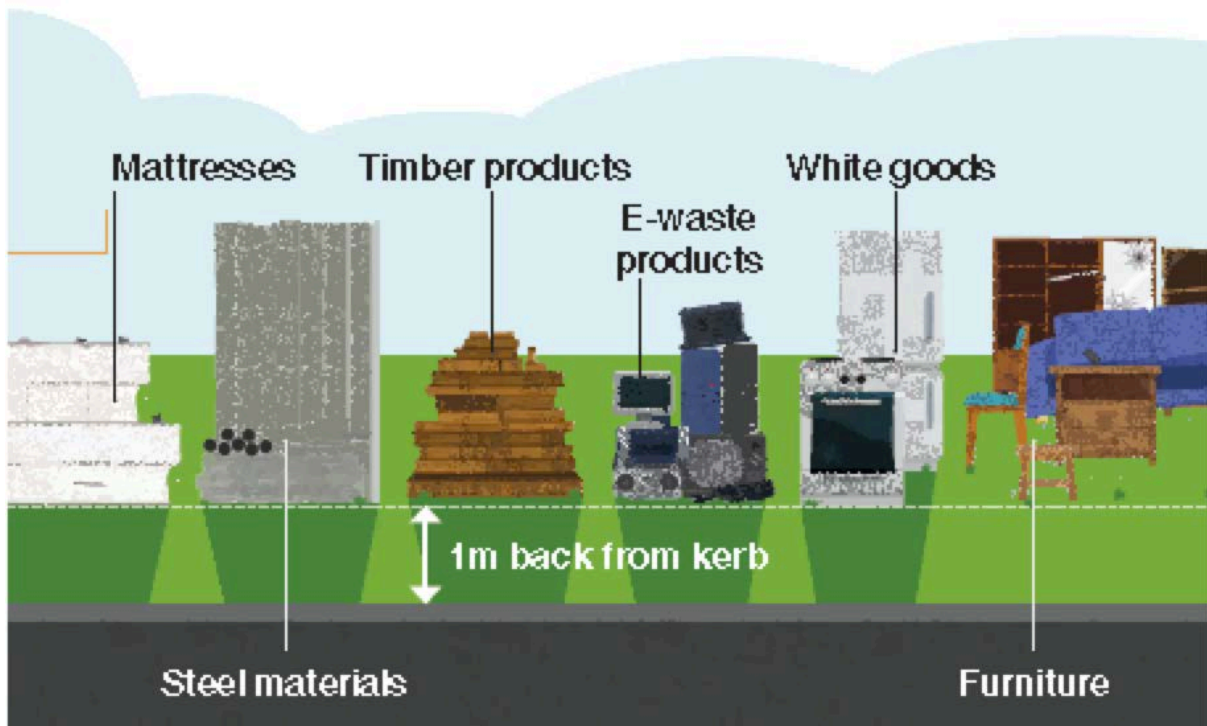
Your bulk waste is taken to the Henderson Waste Recovery Park where it is recycled or sent to landfill.

The following items **will not** be collected:

- ✗ Any items over 1.5m in length
- ✗ Tyres
- ✗ Asbestos, cement or glass fibre products
- ✗ Batteries, paints, chemicals, oils or other household hazardous waste
- ✗ Mirrors

- × Bean bags
- × Oil heaters
- × Construction waste e.g. bricks, sand, cement, rubble, concrete
- × Vehicle parts
- × General waste, food
- × Garden waste e.g. trees, dug out lawn, leaves
- × Gas and air cylinders, fire extinguishers
- × Plate glass, solar panels, shower screens, glass tables etc
- × Pallets
- × No more than 2 cubic metres

If you have difficulties presenting your waste, or are considering combining your verge waste with your neighbour, please arrange this with the City prior to the collection date.



Henderson Waste Recovery Park

The Henderson Waste Recovery Park is owned and managed by the City of Cockburn. It includes a landfill, a Community Drop-Off Facility, a methane power plant and a Reuse Shop.

Landfill

The City's landfill site processes commercial, industrial waste, general household waste and verge waste. Valuable items that can be resold or recycled are removed from the waste stream to prevent them being sent to landfill. The site uses the latest methane recovery and leachate management technologies to limit its environmental impact.

Community Drop-Off Facility

Residents can drop off unwanted items at the Community Drop-Off Facility. These will be separated on-site and recovered if they are able to be reused or recycled.

The Community Drop-Off Facility accepts:

- **Household hazardous waste**, e.g. paints, chemicals, oils, batteries. Up to 20kg or litres will be accepted free without any accompanying waste
- **Construction and demolition waste**
- **Asbestos** must be delivered wrapped and sealed in builder's black plastic and separated from other waste within your trailer. It should be wrapped in parcels that are easily lifted by hand
- **Mattresses**, four mattresses per customer can be accepted (fees apply). Commercial quantities of mattresses can be recycled at the Eastern Metropolitan Council, call (08) 9274 7807
- **General waste** including wood, metal, cardboard, plastic etc
- **Green waste**
- **Polystyrene**
- **Cardboard**



Separate your load before visiting the Park to enable easier unloading at the Community Drop-Off Facility.

Trailer Passes

All City of Cockburn households receive six trailer passes per year to allow them to bring their waste to Henderson Waste Recovery Park. Trailer passes are **non-transferable** and cannot be sold. Use of trailer passes is monitored by the City and any attempt to sell, swap or trade passes on social media platforms, Gumtree or any other means will result in cancellation of all six trailer passes.

Please note: Trailer passes can also be used to drop off green waste to the Regional Resource Recovery Centre:

350 Bannister Road Canning Vale

Phone: (08) 9256 9555

Open 7 days, 8am–4pm.

Mulch

Free mulch is available to all visitors at Henderson Waste Recovery Park. Bring along a trailer or utility vehicle and load the mulch yourself. Ensure that you wear gloves, a dust mask and enclosed shoes. Staff are not able to help with loading mulch into vehicles.

Reuse Shop

The Reuse Shop sells many items that have been recovered from the waste stream rather than going to landfill. Pick up a bargain at the Reuse Shop Friday – Sunday and Public Holidays from 8am to 4pm.



920 Rockingham Road, Wattleup

Phone: 08 9411 3444

Community Drop-Off Facility is open 7 days, 8am–4.30pm except Christmas Day, New Year’s Day and Good Friday.

More information

When you receive your next calendar, please place this one into the yellow-top recycling bin.

The calendar is available on the City of Cockburn's website in PDF and in Croatian, Chinese, Tagalog, Portuguese and Italian. If you require further information please contact Customer Service on 08 9411 3444.

Contact us



City of Cockburn


9 Coleville Crescent, Spearwood WA 6163

Office hours: 8.30am – 4.30pm, Monday – Friday (closed Public Holidays)

Phone: 08 9411 3444

Email: customer@cockburn.wa.gov.au

[City of Cockburn website: cockburn.wa.gov.au](http://cockburn.wa.gov.au)

 This information is available in alternative formats upon request

