

Resource Recovery Calendar 2026



Place bins out
by 6am on your
collection day



Maximum
weight of each
bin is 70kg



Do not park in front
of bins and keep
laneways clear

Changes to verge collections in 2027

From 1 January 2027, changes will be introduced to verge collections.

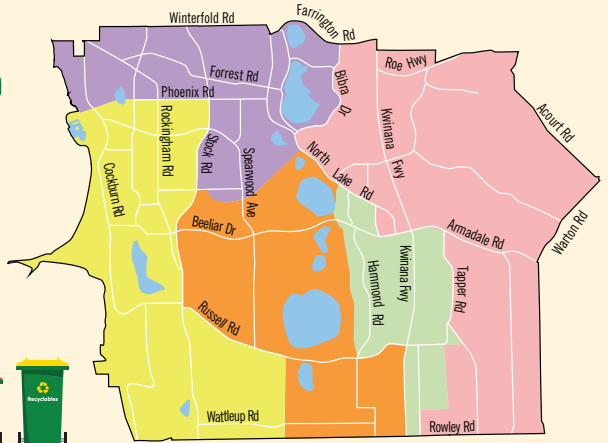
Some properties will move to new collection areas, and green waste verge collections will be reduced from two to one per year as part of a 12-month trial.

General and Recycling Waste Bin Collection Map

This map shows which day your general and recycling waste bins are collected.

Legend

- Mon
- Tues
- Wed
- Thur
- Fri



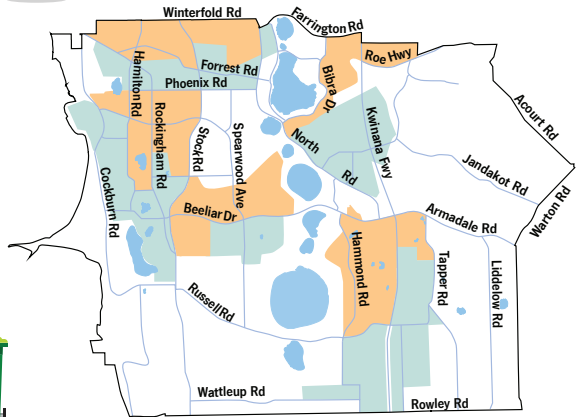
Garden Organics Bin Collection Map

Please place bins out for collection before 6am.

This map shows which week your garden organics bin is collected, if you have three bins.

Legend

- Week 1
- Week 2



January 2026							February 2026							March 2026							April 2026						
S	M	T	W	T	F	S	S	M	T	W	T	F	S	S	M	T	W	T	F	S	S	M	T	W	T	F	S
				1	2	3	1	2	3	4	5	6	7	1	2	3	4	5	6	7	1	2	3	4			
4	5	6	7	8	9	10	8	9	10	11	12	13	14	8	9	10	11	12	13	14	5	6	7	8	9	10	11
11	12	13	14	15	16	17	15	16	17	18	19	20	21	15	16	17	18	19	20	21	12	13	14	15	16	17	18
18	19	20	21	22	23	24	22	23	24	25	26	27	28	22	23	24	25	26	27	28	19	20	21	22	23	24	25
25	26	27	28	29	30	31								29	30	31					26	27	28	29	30		

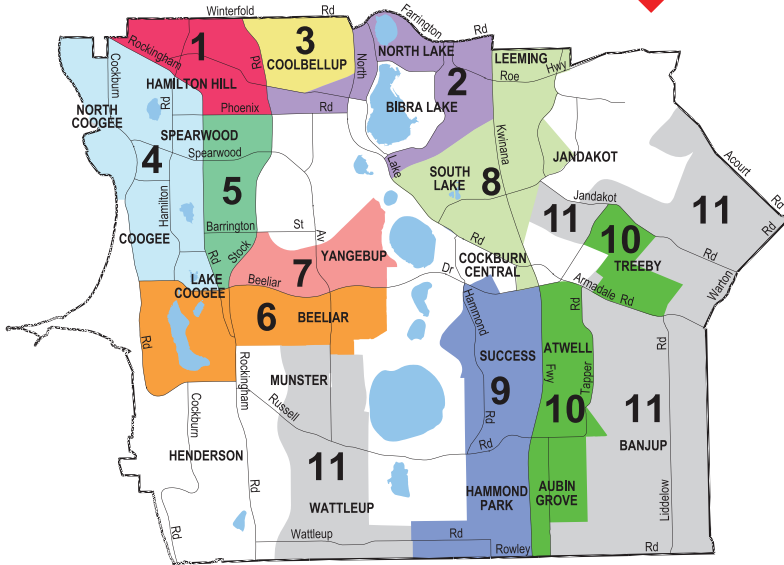
May 2026							June 2026							July 2026							August 2026						
S	M	T	W	T	F	S	S	M	T	W	T	F	S	S	M	T	W	T	F	S	S	M	T	W	T	F	S
					1	2	1	2	3	4	5	6	1	2	3	4				1	2	3	4	5	6	7	
3	4	5	6	7	8	9	7	8	9	10	11	12	13	5	6	7	8	9	10	11	2	3	4	5	6	7	8
10	11	12	13	14	15	16	14	15	16	17	18	19	20	12	13	14	15	16	17	18	9	10	11	12	13	14	15
17	18	19	20	21	22	23	21	22	23	24	25	26	27	19	20	21	22	23	24	25	16	17	18	19	20	21	22
24	25	26	27	28	29	30	28	29	30					26	27	28	29	30	31	23	24	25	26	27	28	29	
31																					30	31					

September 2026							October 2026							November 2026							December 2026						
S	M	T	W	T	F	S	S	M	T	W	T	F	S	S	M	T	W	T	F	S	S	M	T	W	T	F	S
			1	2	3	4				1	2	3	1	2	3	4	5	6	7	1	2	3	4	5			
6	7	8	9	10	11	12	4	5	6	7	8	9	10	8	9	10	11	12	13	14	6	7	8	9	10	11	12
13	14	15	16	17	18	19	11	12	13	14	15	16	17	15	16	17	18	19	20	21	13	14	15	16	17	18	19
20	21	22	23	24	25	26	18	19	20	21	22	23	24	22	23	24	25	26	27	28	20	21	22	23	24	25	26
27	28	29	30				25	26	27	28	29	30	31	29	30						27	28	29	30	31		

Bulk Waste and Garden Organics Verge Collection

Place all verge material out by 6am on the Monday of the collection week. Do not place verge material out more than **THREE** days before the collection begins for your area. Separating your waste, as per picture on the next page will help us recycle.

Residential Properties Only



Please ensure you are aware of your correct area by number and colour.

Please do not present more than two cubic metres.

Area	Bulk Waste 1	Garden Organic 1	Bulk Waste 2	Garden Organic 2
	2026	2026	2026	2026
Week Starting				
1	5-January	4-May	13-July	12-October
2	12-January	11-May	20-July	19-October
3	26-January	18-May	27-July	26-October
4	2-February	25-May	3-August	2-November
5	16-February	1-June	17-August	9-November
6	23-February	8-June	24-August	16-November
7	9-March	15-June	31-August	23-November
8	16-March	22-June	7-September	30-November
9	30-March	29-June	14-September	7-December
10	13-April	6-July	21-September	14-December
11	27-April		28-September	

Important information for verge collections

Details on how to present verge waste:

- ✓ Do not place verge material out more than **three days** before the collection date for your area. A non-compliance notice will be issued for early “set outs”
- ✓ Ensure your verge material is presented before 6am on the Monday of your collection week. The City will not return for waste that was set out late
- ✓ Place away from walls, fences, water meters, power poles and letterboxes
- ✓ Separate white goods, steel, mattresses and e-waste from other verge collection items for recycling
- ✓ Keep checking your pile to ensure no illegal dumping has occurred (refer to following page)
- ✗ Do not place on vacant land, reserves or parklands
- ✗ Do not place on artificial turf, brick paving or driveway. Contact the City for an alternative pick up location
- ✗ Do not place under trees or over sprinklers
- ✗ Do not follow your neighbour – check your collection date

If your verge bulk waste or garden organics are not compliant, we will not return to collect them.

Two cubic metres of waste per property.



Garden Organics Verge Collections

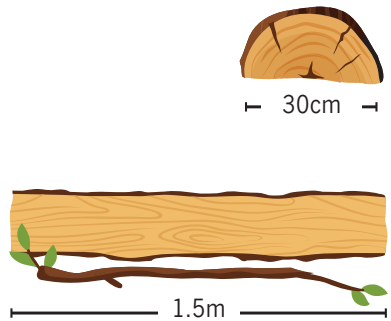
The following items **WILL** be collected:

- ✓ Prunings up to 1.5m in length and 30cm in diameter

Your verge garden organics are taken to the Henderson Waste Recovery Park where they are processed into compost off site by a contractor. The compost is free and available to people visiting HWRP.

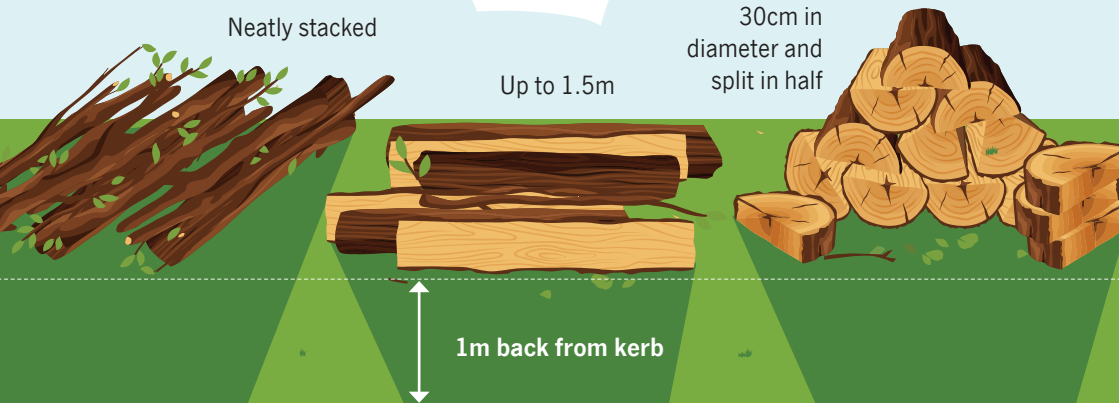
The following items **WILL NOT** be collected:

- ✗ Bags or boxes of leaves/grass clippings
- ✗ Dug out lawn
- ✗ General waste, junk or white goods
- ✗ Loose leaves/grass clippings
- ✗ Please do not present more than two cubic metres
- ✗ Sand or soil materials
- ✗ Stumps or palm logs
- ✗ Weeds and root materials
- ✗ Wooden items not from the garden, like furniture
- ✗ Wooden fence posts



Collection as per usual on all Public Holidays, including Good Friday.

Each property may present up to two cubic metres of waste for verge collections.



Bulk Waste Verge Collections

Each property may present up to two cubic metres of waste for verge collections.

The following items **WILL** be collected:

- ✓ General bulk waste e.g. furniture, mattresses

Your verge bulk waste is taken to the Henderson Waste Recovery Park where it is recycled or sent to landfill.

The following items **WILL NOT** be collected:

- ✗ Any items over 1.5m in length
- ✗ Asbestos, cement or glass fibre products
- ✗ Batteries, paints, chemicals, oils or other household hazardous waste
- ✗ Bean bags
- ✗ Construction waste e.g. bricks, sand, cement, rubble, concrete
- ✗ General waste, food
- ✗ Garden waste e.g. trees, dug out lawn, leaves
- ✗ Gas and air cylinders, fire extinguishers
- ✗ Mirrors
- ✗ Oil heaters
- ✗ Plate glass, solar panels, shower screens, glass tables etc
- ✗ Pallets
- ✗ Please do not present more than two cubic metres
- ✗ Tyres
- ✗ Vehicle parts

If you have difficulties presenting your waste, or are considering combining your verge waste with your neighbour, please arrange this with the City prior to the collection date.



Why waste it when you can gift it?

Have you tried selling, donating or gifting your quality items before they go on the verge? Sell them on your local buy and sell page, donate them to a charity shop or drop them off at the Henderson Waste Recovery Park Reuse Shop.



Community Recycling Hubs

You can drop off small quantities of dry-cell batteries, light globes, mobile phones and printer toner cartridges at Cockburn ARC, the Wetlands Centre Cockburn, Cockburn Gateways Shopping Centre and Cockburn Libraries in Spearwood, Coolbellup, Success and Port Coogee Village Shopping Centre.

You can also drop off aerosol cans to the front counter at the Administration Building (9 Coleville Crescent, Spearwood), Seniors Centre, Coolbellup Hub, the Wetlands Centre Cockburn, Aubin Grove Sport and Community Facility, Cockburn ARC and the Operations Centre (52 Wellard Street, Bibra Lake).

Henderson Waste Recovery Park

The Henderson Waste Recovery Park is owned and managed by the City of Cockburn. It includes a landfill, a Community Drop-Off Facility, a methane power plant and a Reuse Shop.

Landfill

The City's landfill site processes commercial waste, industrial waste, general household waste and verge waste. Valuable items that can be resold or recycled are removed from the waste stream to prevent them being sent to landfill. The site uses the latest methane recovery and leachate management technologies to limit its environmental impact.

Community Drop-Off Facility

Residents can drop off unwanted items at the Community Drop-Off Centre which has a new access only off Dalison Avenue, the centre is not open on Wednesdays. These will be separated on-site and recovered if they are able to be reused or recycled.

The Community Drop-Off Facility accepts:

- **Household hazardous waste** e.g. paints, chemicals, oils, aerosols, batteries. Up to 20kg or litres will be accepted free, without any accompanying waste
- **Mattresses** four mattresses per customer can be accepted (fees apply). Commercial quantities of mattresses can be recycled at the Eastern Metropolitan Council, call 08 9274 7807.
- **Construction and demolition waste** (fees apply)
- **General waste** (no fees apply) including wood, metal, cardboard, plastic etc
- **E-Waste** (free)
- **Green waste** (fees apply)
- **Cardboard** (free if clean)
- **Polystyrene** (free if clean).

Trailer Passes

All City of Cockburn households receive six trailer passes per year to allow them to bring their waste to Henderson Waste Recovery Park. Each Trailer Pass will allow the disposal of one cubic metre (1m³) of waste. Trailer passes are **non-transferable** and **cannot be sold**. Use of trailer passes is monitored by the City and any attempt to sell, swap or trade passes on social media platforms, Gumtree or any other means will result in cancellation of all six trailer passes.

Please note: Trailer passes can also be used to drop off green waste to the Regional Resource Recovery Centre: 350 Bannister Road Canning Vale, 08 9256 9555, Open 7 days, 8am–4pm.

Compost

Mulch used as weed suppression is no longer available at Henderson Waste Recovery Park. Instead, free compost for soil enrichment, moisture retention and the promotion of plant growth is available. This compost is made from your garden organics bin. Please note that food organics is not permitted in the garden organics bin.

Bring along a trailer or utility vehicle and load the compost yourself. Ensure that you wear gloves, a dust mask and enclosed shoes. Staff are not able to help with loading compost into vehicles.

Reuse Shop

The **Reuse Shop** sells many items that have been recovered from the waste stream rather than going to landfill. Pick up a bargain at the Reuse Shop Fridays 8am to 4pm and Saturdays 8am to 1pm. Not open on public holidays. 920 Rockingham Road, Wattleup is **ONLY** entry for the Reuse Shop. 08 9411 3444.

Community Drop-Off Facility

Residential **ONLY**

Open 8am–4pm excluding Wednesdays, Christmas Day, New Year's Day and Good Friday.



Christmas and New Year Bin Collections

Over the Christmas break, bins will not be collected on Friday 25 December 2026 or Friday 1 January 2027.

Over these two weeks Friday's bins will be collected on Saturday.



City of Cockburn Whadjuk Boodjar
9 Coleville Crescent, Spearwood WA 6163

Office hours 8.30am–4.30pm
Monday–Friday (closed Public Holidays)

08 9411 3444 | customer@cockburn.wa.gov.au

www.cockburn.wa.gov.au



The calendar is available on the City of Cockburn's website in PDF and in Croatian, Chinese, Tagalog, Portuguese and Italian. If you require further information please contact Customer Service on 08 9411 3444.



This information is available in alternative formats upon request.



Hard copies of this calendar are available at City libraries and the Cockburn Administration Centre.



A Waste Authority Program

This guide is printed on 100% recycled paper



art1.org.au

